

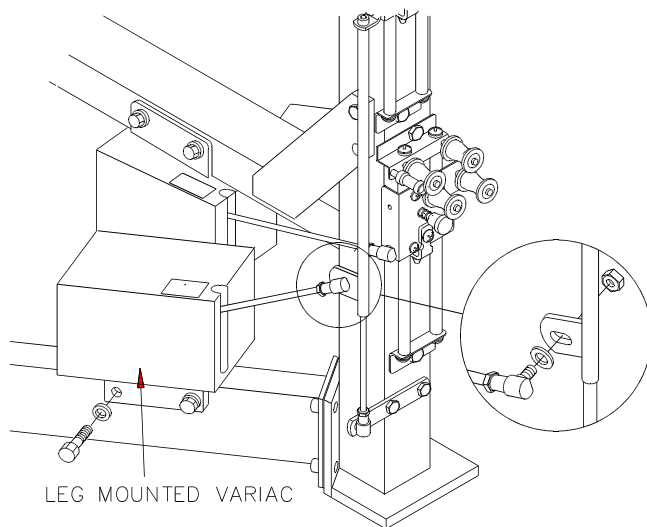
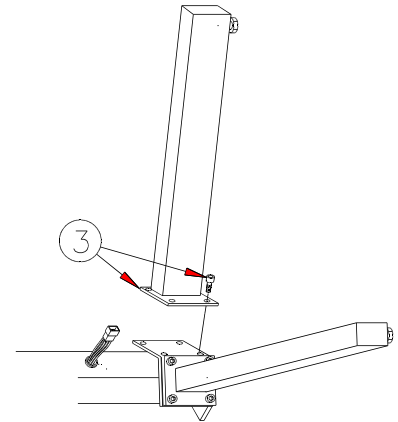
PLATTER SYSTEM UNCRATING & INSTALLATION INSTRUCTIONS #2729

Before proceeding, read through these instructions carefully. Familiarize yourself with the names of the parts found in the parts manual included with the unit.

Step 1. Remove the steel bands and cardboard from the column crate. Locate and remove the Control plate box which is secured inside the crate.

Step 2. Remove the top, upper end and side braces of the column crate. The column is bolted to the bottom and the lower end of the crate.

Step 3. Unbolt the legs from the bottom of the crate. Remove the leg bolts from the base of the column. With the column still laying flat in the crate, attach the legs.
NOTE FOR 5 DECK SYSTEMS: the



Leg mounted variac must be positioned as shown. Make sure the take-up plate moves up and down with no restrictions. Plug the upper cable (directly below the lower arm) from the front of the column into the 9 pin receptacle on the arm mounted variac. The bracket holding the top castor assemblies has been positioned at an angle for shipment. Reposition this bracket correctly before operation (see parts manual).

holding the top of the column to the crate. By pushing on the back of the column, lean it forward and remove the remainder of the crate.

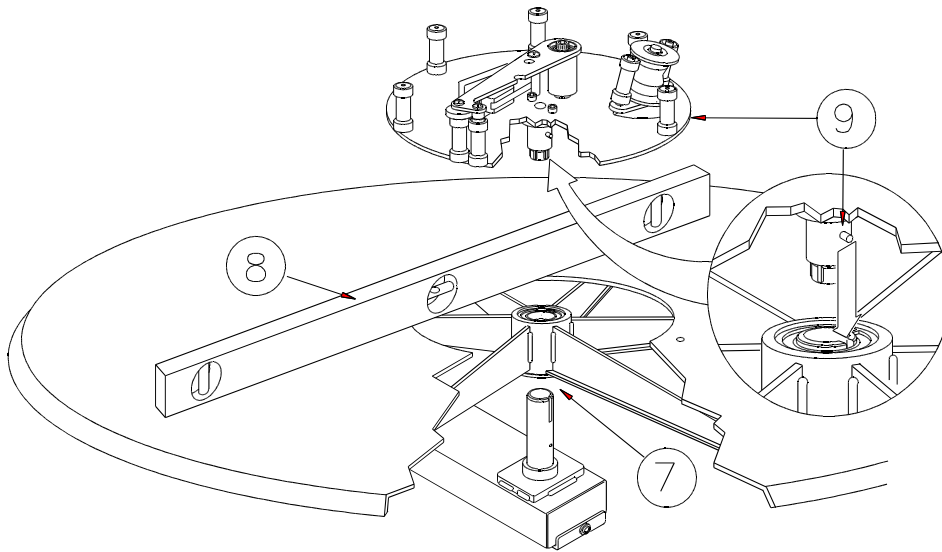
Step 4. Stand the machine upright. Remove the nuts holding the base of the column to the crate and the bracket

Step 5. Place the machine in the desired position. When choosing the location, bear in mind that longer spans of film will sag and may require additional support. The projector arms included in the control plate box are used to route and support the film between the platter system and the projector. They are made of aluminum and are easy to drill, mount and bend to any angle required. Additional projector arms (part #1515) can be used to support long spans of film.

Step 6. Remove the red protector cap from the end of each arm spindle and verify that the arm bearing spacer is in place on the spindle. Remove the rubber bands holding the drive motor wheels in place.

Step 7. Remove the steel bands and cardboard from the disk crate and lay it on its side. Remove the bolt from the center of the crate and separate the two halves. Starting with at bottom arm, place a disk on each arm spindle.

Step 8. Place a level across the center of one of the disks. Adjust the leveling screws in the bottom of the legs to level the machine.



Step 9. Install the control plates by aligning the pin on the bottom with the slot in the arm spindle and gently pushing it into place. The control plate can be moved from arm to arm as required during platter operation.

Step 10. Connect the power supply to a grounded 120V or 220V electrical outlet as required. See page 3 for grounding instructions.

Step 11. The speed of the motors were adjusted at the factory, however, it is recommended that you recheck them before platter operation. See PLATTER TIMING in the PLATTER OPERATION MANUAL.



WARNING

Risk of Electrical Shock! Connect to a properly grounded electrical outlet only!

GROUNDING INSTRUCTIONS



WARNING

THIS PRODUCT MUST BE GROUNDED WHILE IN USE TO PROTECT THE OPERATOR FROM ELECTRIC SHOCK!

In the event of a malfunction, grounding provides the path of least resistance for electric current to reduce the risk of electric shock. This product is equipped with an electrical cord that has a grounding conductor and a grounding plug. The plug **MUST** be plugged into a matching electrical receptacle that is properly installed and grounded in accordance with **ALL** local codes and ordinances.



DANGER

DO NOT MODIFY THE PLUG PROVIDED.

If it will not fit the electrical receptacle, have the proper receptacle installed by a qualified electrician. Improper electrical connection of the equipment-grounding conductor can result in risk of electric shock. The conductor with green insulation (with or without yellow stripes) is the equipment-grounding conductor.

DO NOT connect the equipment-grounding conductor to a live terminal if repair or replacement of the electric cord or plug is necessary.

Check with a qualified electrician or service personnel if you do not completely understand the grounding instructions, or if you are not sure the equipment is properly grounded.

USE ONLY A 3-WIRE EXTENSION CORD THAT HAS A 3-PRONG GROUNDING PLUG AND A 3-POLE RECEPTACLE THAT ACCEPTS THE POWER SUPPLY CORD'S PLUG. REPLACE A DAMAGED OR WORN CORD IMMEDIATELY.

This product is intended for use on a circuit that has an electrical receptacle with a grounding conductor as shown in Figure 1. If a properly grounded electrical receptacle is not available, an adapter (see Figure 2) can be used to **temporarily** connect this plug to a 2-contact ungrounded receptacle. The adapter has a rigid lug extending from it that **MUST** be connected to a permanent earth ground, such as a properly grounded receptacle box.

THIS ADAPTER IS PROHIBITED IN CANADA.

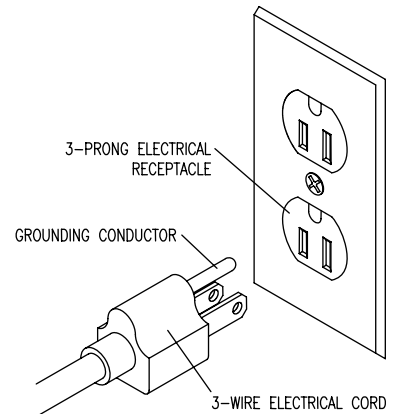


Figure 1

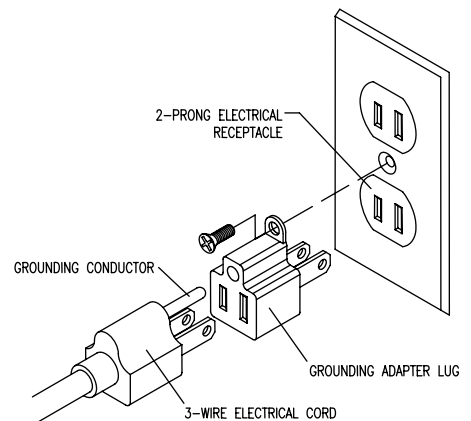


Figure 2



WARNING

In all cases, make certain the electrical receptacle is properly grounded. If you are not sure, have a certified electrician check the electrical receptacle.