

MAKE-UP TABLE (ELR) ADAPTER PLATE

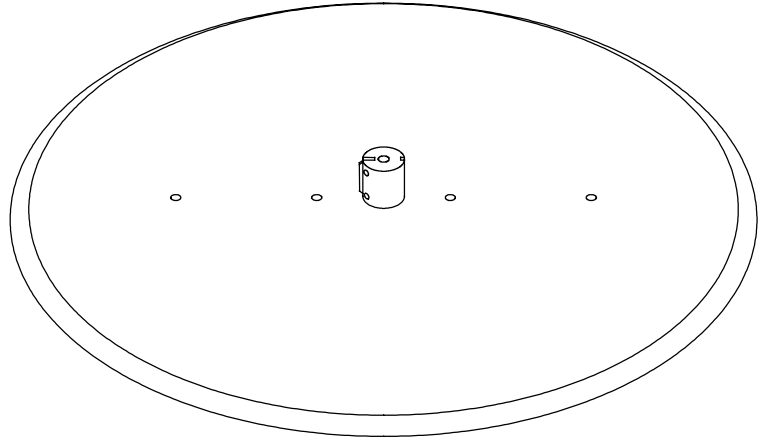
Extended Length Reel Adapter Plate for Make-Up Table

Product Information Bulletin #3915

Designed for use on a make-up table for convenient film make-up and break down from an Extended Length Reel. Can also be used to handle coming attractions and reel-to-reel requirements.

FEATURES

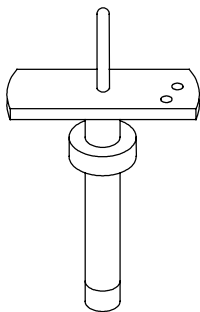
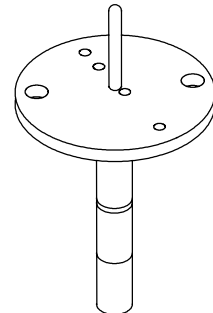
- Replaces the plastic ELR when making-up and breaking down from the table.
- Provides more precise film alignment with rollers.
- Accepts standard 13" or 19" center rings.
- Can be used with all film cores with 1" I.D. centers (both internally and externally keyed).



Film Capacity: Using 4" Core - 6300 feet
Using 13" Center Ring - 4750 feet.
Using 19" Center Ring - 2700 feet

Specifications: 26" diameter, .090" thick aluminum

Available for round drive plates
**Order ELR Adapter Plate Assembly
Part #3930**



Available for early model drive plates
**Order ELR Adapter Plate for Pre-'91 Tables
Part #3931**

Manufactured in U. S. A. by Design & Manufacturing, Inc. Fisher, IL 61843
www.design-mfg.net or Phone: 217/897-1172