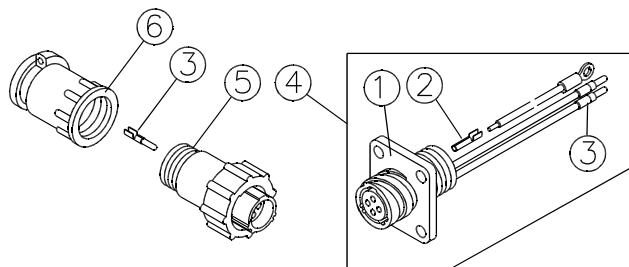


Alpha System Table Port Plug Configurations #3966

PRE 1996 ALPHA TABLE PLUG AND VARIAC TABLE PORT RECEPTACLE

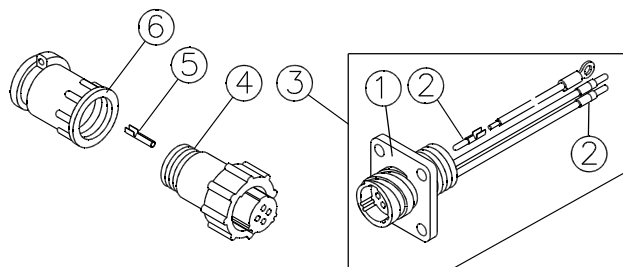


- 1) 2068 Receptacle, 4-Pin
- 2) 2063 Socket, CPC
- 3) 2064 Pin, CPC
- 4) 2940 Variac Table Port Wiring Harness Pre 96
- 5) 2069 Plug, 4-Pin
- 6) 2070 Clamp, Cable #11

Pre 1996 Alpha tables listed below have a female plug with male pins. This mates up with a male receptacle with female sockets on the variac table port.

Model "T" (Jan 83 - Jul 91)
Model "T-AL2" (Jul 91-Jan 96)

POST 1996 ALPHA TABLE PLUG AND VARIAC TABLE PORT RECEPTACLE



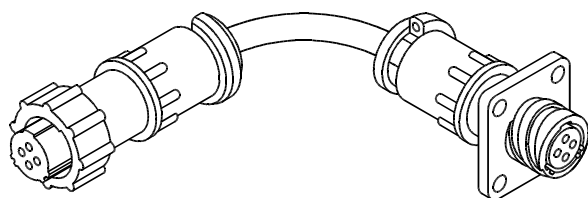
- 1) 2056 Receptacle, 4-Pin (Std. sex)
- 2) 2064 Pin, CPC
- 3) 2977 Variac Table Port Wire harness Post 96
- 4) 2057 Plug, 4-Pin (Std. Sex)
- 5) 2063 Socket, CPC
- 6) 2070 Clamp, Cable #11

Post 1996 tables listed below have a male plug with female sockets. This mates up with a female receptacle with male pins on The variac table port.

Model "T-AP" (Jan 91-Dec 95)
Model "T-6" (Jan 96-present)

Pre 1996 tables can be connected to post 1996 variacs by using Jumper #3008 shown below. Post 1996 tables can be connected to pre 1996 variacs by using Jumper # 3003 shown below.

JUMPER PRE 1996 ALPHA TABLE TO POST 96 ALPHA PLATTER PART #3008



JUMPER POST 1996 ALPHA TABLE TO PRE 96 ALPHA PLATTER PART #3003

