

FEED CASTOR POTTS SP/ALPHA RETROFIT

PRODUCT INFORMATION BULLETIN # 4607

Two different kits shown below are required for this retrofit.

Drill Kit part number 4601, includes: three drill fixtures.

Feed Castor Kit part number 4600, includes: Feed Castor assembly and 7/8" wire bushing

The three drill fixtures are each marked with a "T", "M", and "B" to distinguish between the top, middle, and bottom arm locations as shown in figure 1.

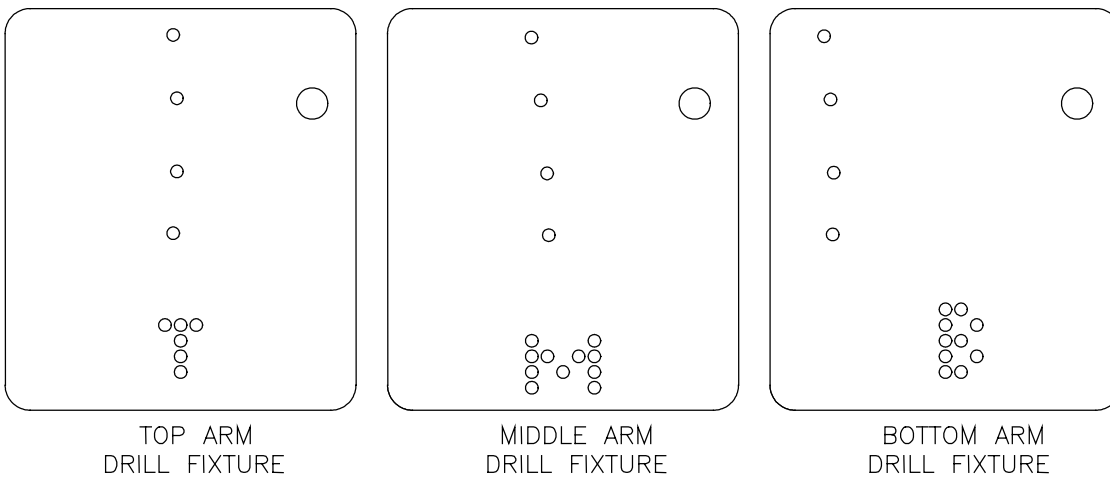


Figure 1

Drill Kit Directions:

1. Remove all three castor swivel assemblies from the side of the column
2. Remove the disks from all three arms.
3. Remove all three arms from the column, unplugging the wiring at the column as they are removed.
4. Pin the 5/16" hole in the top arm drill Fixture in the top arm mounting bolt hole using the arm mounting bolt. (See figure 2).
5. Insure that the edge of the fixture is parallel with the front edge of the column.
6. Center punch the four 1/8" hole locations on the column as shown. (See figure 2).
7. Remove the fixture.

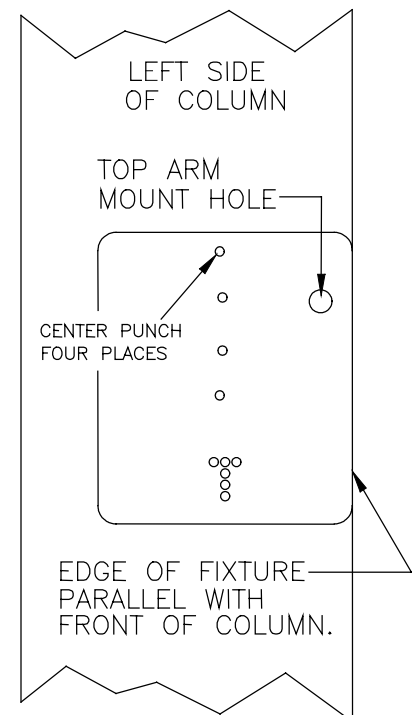


Figure 2

8. Drill the upper and lower center punch using a .156 drill bit and tap with a 10-32 tap.
9. Drill the two middle center punch locations with a 3/4" roto broach. (See figure 3)

CAUTION: Do not use a standard drill!

10. Use a cut off wheel attached to a dremal Tool to cut the remaining burr off to 1/32" from the outside edge of the 3/4" hole (See figure 3).
11. Repeat this procedure using the middle and bottom arm drill fixtures provided.

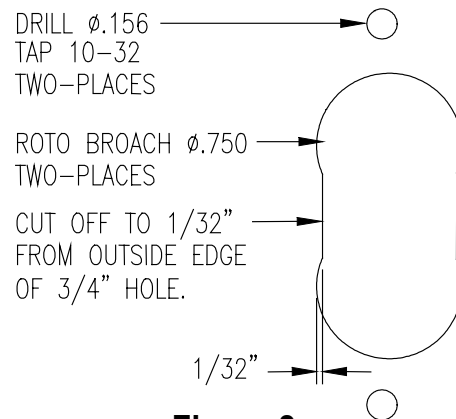


Figure 3

Feed Castor Kit Directions:

1. Remove the selector switch panels on one arm.
2. Loosen the screw at terminals 10 & 12 of the mode selector switch, remove the Potts SP switch block and discard.
3. Separate the plug in the new Feed Castor Wire Harness. Route the stripped ends of the two new feed castor wires through the arm. Connect the red wire to terminal 10 and the white wire to terminal 12 of the Mode Selector Switch (see figure 4).

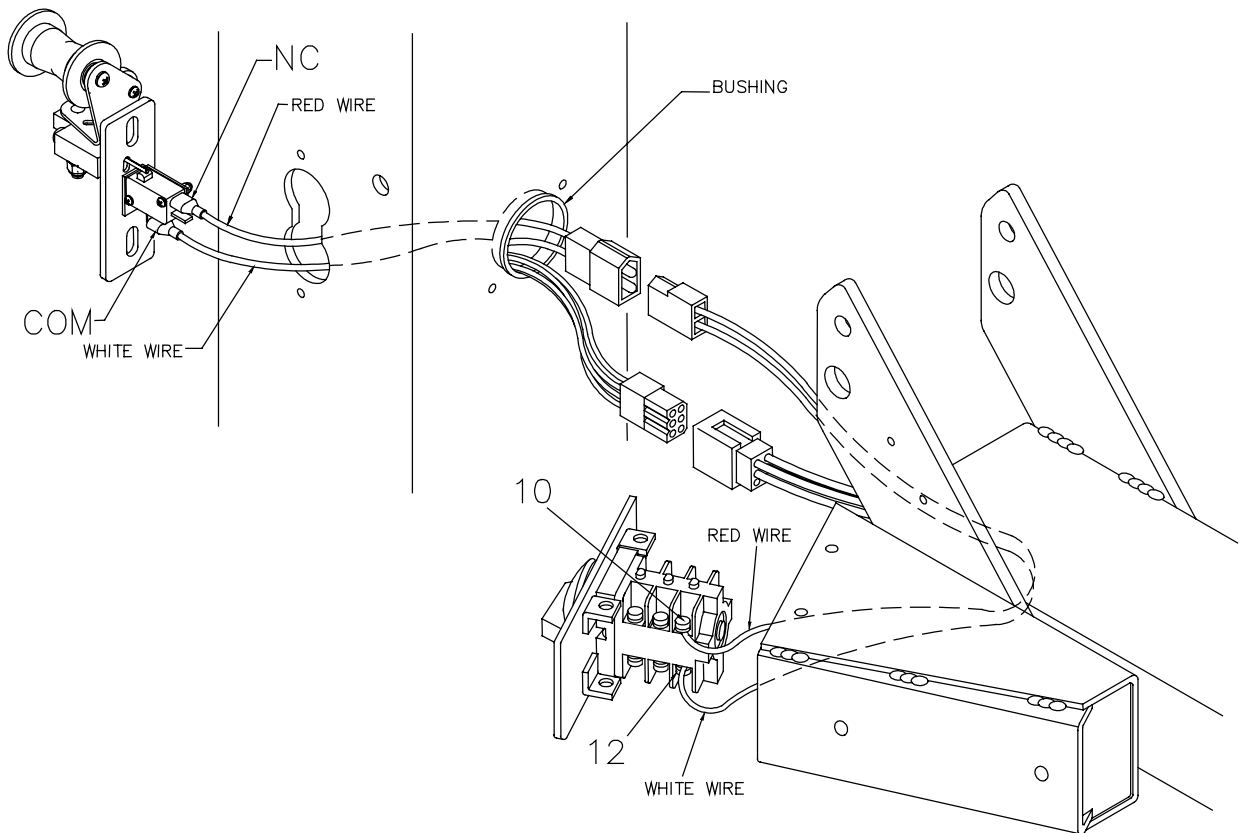


Figure 4

NOTE: For Alpha platters not pre-wired for the Potts SP switch, remove the yellow wire from terminal 9 on the switch and connect to terminal 11.

4. Reinstall the switch panel on the arm.

NOTE: The switch position plate used on Alpha Platters will now read incorrectly. The "PAYOUT" position will now be "RUN" and the "REWIND" position will no longer function after the conversion is complete. See figure 5 for the correct reading.

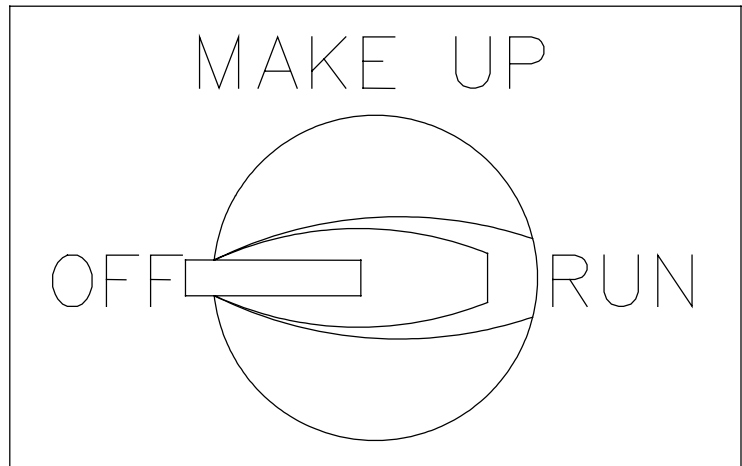


Figure 5

5. If the column is equipped with a 9 pin arm plug mounted to the column with two screws, Remove the screws and allow the plug to hang free.
6. Place the 7/8" bushing around the feed castor wires and column/arm harness wires and insert the bushing into the 7/8" hole in the column.

NOTE: If the platter system is a later version, a plug and bushing as shown in figure 4 is already installed.

6. Run the red and white wires of the remaining half of the new harness through the column as shown in figure 4. Connect the red wire to the NC contact of the feed castor switch, and the white wire to the COM contact of the feed castor switch. (See figures 4 & 5). Install the feed castor switch on the column.
7. Install the arms on the column starting from the bottom arm.

