

AP to SCDC Retrofit #4651

The following procedure and tools are required to convert an AP platter system to an SCDC platter system:

- 1) AMP pin removal tool (2673)
- 2) Standard Crimping Tool

Caution: To avoid electrical shock hazard turn the power switch off and unplug the power cord.

COLUMN

1. Remove the disks, drive motors, arms, feed castors, and variac. Leave the Linkage Rod connected to the Take-Up Carriage.
2. Tie a string to the variac plug on the existing AP column wire harness to aid pulling in the new harness.
3. Remove the two screws in the column end cap and discard the end cap.
4. Remove the column wire harness through the top of the column.
5. Attach the string to the power supply plug on the SCDC Column Wire Harness and install through the top of the column
6. Install the new column end cap.

FEED CASTORS

IMPORTANT: Failure to install the Feed Castor Diodes correctly may result in damage to the control boards when the unit is powered up.

1. Remove the white and black wires from the rear of the make-up switch, located on the rear of the feed castor assembly, and install the diode/capacitor (with clips) as shown in figure #1.

2. Reconnect the white and black wires as shown in figure #1. (*The white wire's spade connection should be perpendicular to the switch so that the white and orange wires do not short.*)

3. After the diode modifications are complete reinstall the three feed castor assemblies.

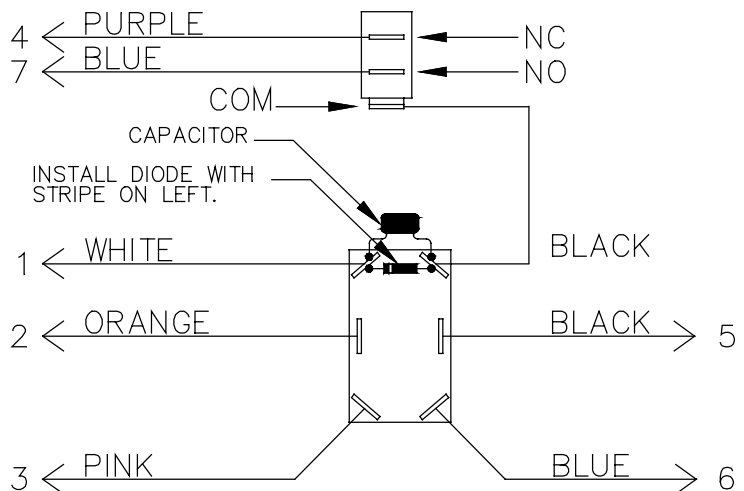


Figure 1

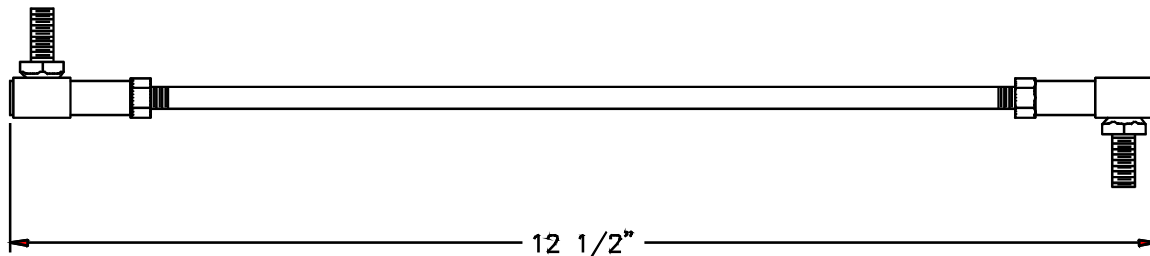
POWER SUPPLY

1. Install the SCDC Power Supply.

2. Remove the Power Supply cover. Remove the Sockethead Capscrew securing the Sensor Disk.
3. Adjust the take-up linkage rod to 12 2" plus or minus 1/32" as shown in figure #2.
4. Connect the linkage rod to the sensor disk. (See SCDC Operation Manual.)
5. Carefully slide the sensor disk into the slot in the SCDC Rewind Card and reinstall the Sockethead Capscrew securing the disk and flanged washer.

NOTE: When reinstalling the sensor disk make sure the flanged washer is installed with the large flange against the mount plate.

6. Remove and discard the take-up carriage stop pin.



Figure

2

DRIVE MOTORS

1. Remove the AP drive motor wire harness and install the SCDC drive motor wire harness. Butt splice the white and black harness wires directly to the motor leads (wire orientation is not important). **NOTE:** The existing motor diode is not used and is left unconnected.

ARMS

1. Remove the arm light cover assembly and discard. Loosen the 8-32 set screw in the front of the spindle, push the wires up and using the AMP pin removal tool, disconnect the arm wire harness from the spindle receptacle. Remove the spindle receptacle and discard.
2. Remove the screws holding the motor receptacle and use the AMP pin removal tool to disconnect the wires from the motor receptacle. You will be reusing this receptacle.
3. Remove the arm wire harness and discard. Install the SCDC arm wire harness. Insert the orange wire into pin hole #2 and the black wire into pin hole #3 of the motor receptacle. Reinstall the receptacle.

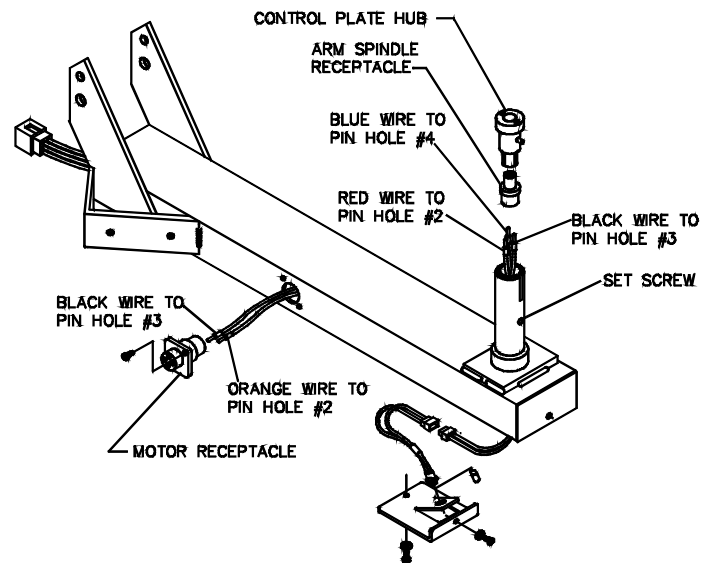


Figure 3

4. Thread the three spindle receptacle wires through the spindle, insert the red wire into pin hole

#2, the black wire into pin hole #3 and the blue wire into pin hole #4 of the spindle receptacle. (See Fig. 3, page 2.)

5. Using a SCDC control plate, connect the control plate hub to the spindle receptacle as shown in Fig. 4. Pin # 1 of the control plate hub *must* match pin #1 of the arm spindle receptacle.
6. Insert the control plate hub and receptacle into the spindle. Seat the control plate and tighten the 8-32 set screw.
7. Install the SCDC light cover assembly.
8. Starting with the lower arm, reinstall the arms, motors and disks. Check the motor height adjustment as per the SCDC Operation Manual page 5.
9. This completes the conversion, read through the SCDC Operation Manual before operating the platter.

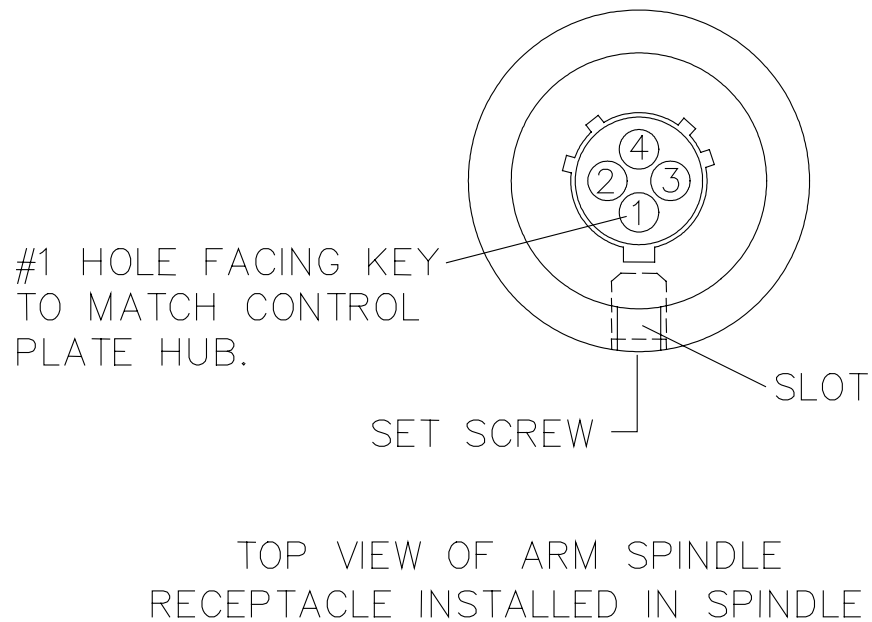


Figure 4