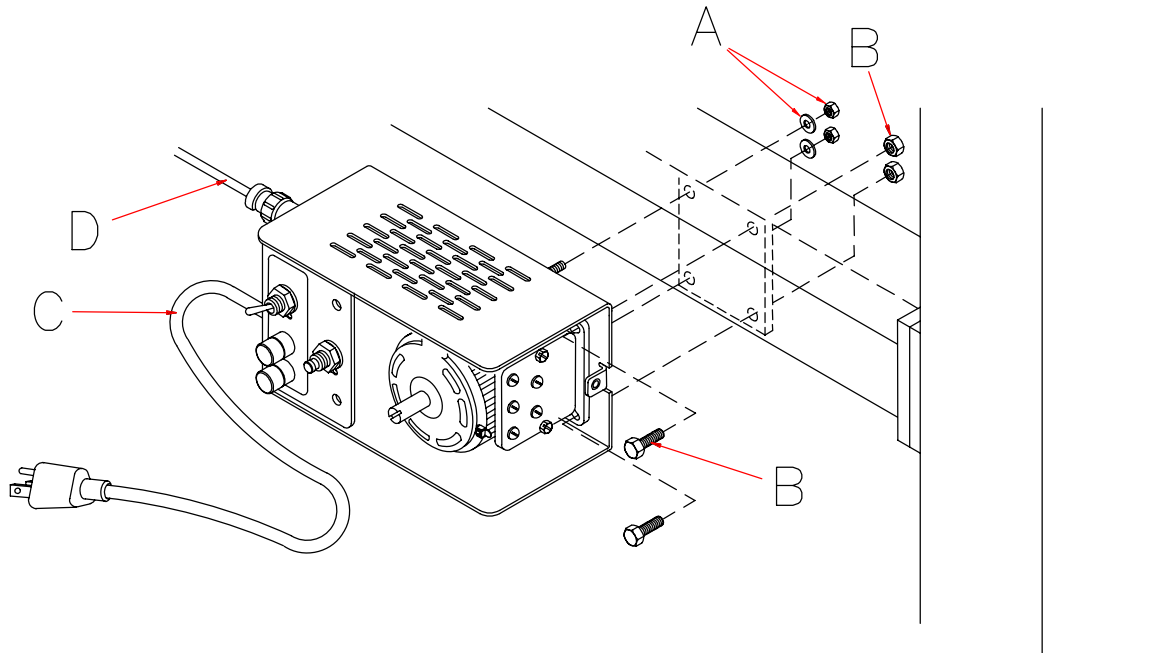


# POTTS VARIAC

## Installation and Parts List #5026



### INSTALLATION

1. Remove the variac cover, the #10 nuts and washers on the back of the variac and the two 1/4" bolts securing the variac inside the shell.
2. Place the variac assembly on the mount plate and loosely install the #10 flatwashers and nuts on the two #10 studs (A).

**NOTE:** Some platter systems will have interference between the top of the new variac assembly and the platter arm. It may be necessary to elongate the holes in the mount plate or grind down the weld to install the new variac.

3. Install the two 1/4" bolts (B) through the transformer base and the mount plate and install nuts. Now tighten all four nuts.
4. Reinstall the cover on the variac.

**NOTE:** Make sure the wires to the variac are clear of the cover when installing.

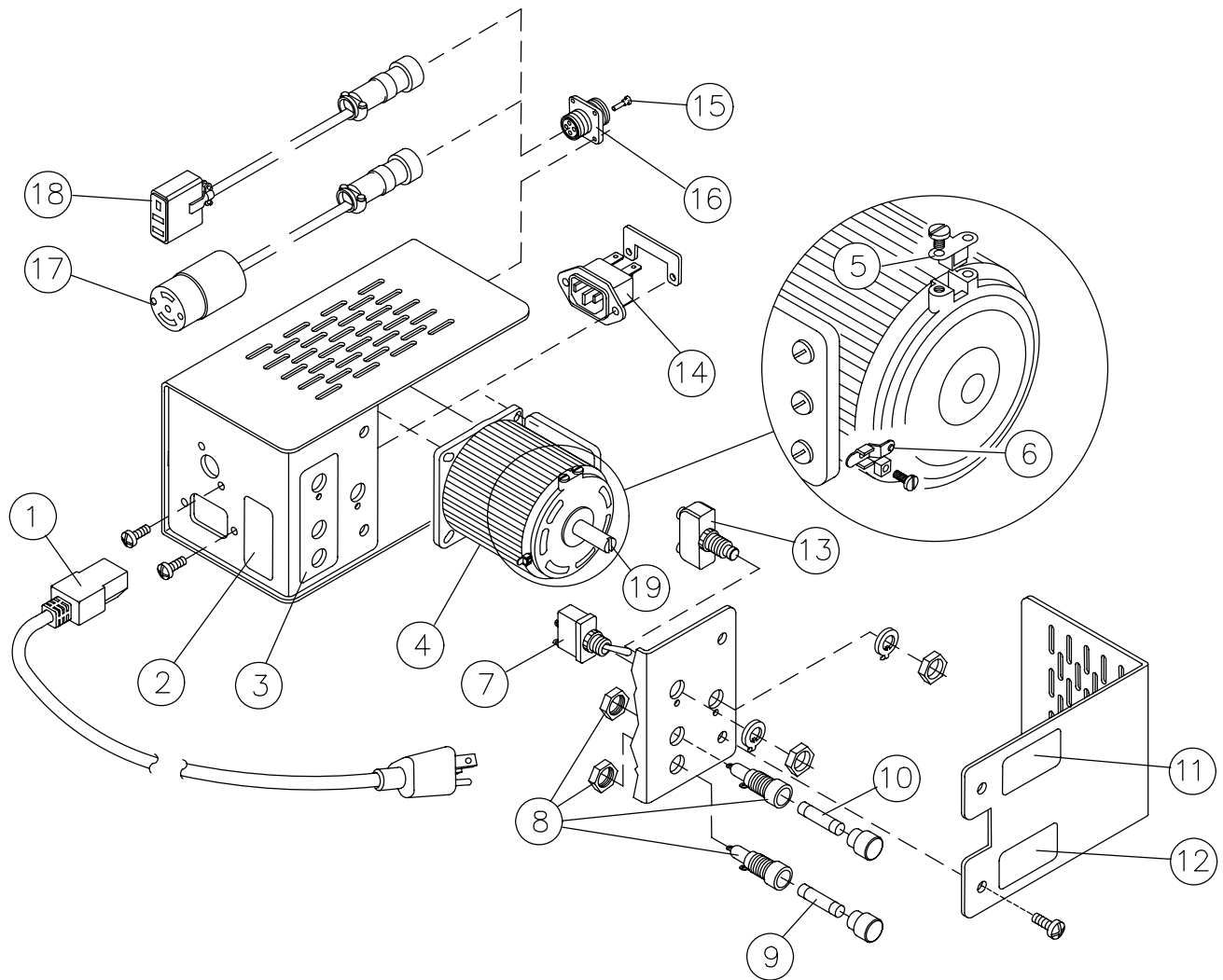
Installation (continued)

5. Raise the take-up carriage to the top of its travel and hold in place with a rubber band.
6. Use a screwdriver to rotate the variac shaft counter clockwise until the variac contacts the stop.
7. Install the linkage hub on the variac shaft. Use the screwdriver on the variac shaft to check that the variac is fully counter clockwise. Then rotate the shaft clockwise a small amount and snug the setscrew in the linkage hub against the shaft.

**NOTE:** Rotating the shaft a small amount away from the stop will allow the take-up to reach the extent of its travel before the variac contacts the stop.

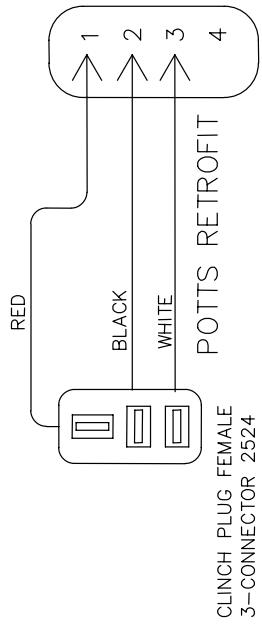
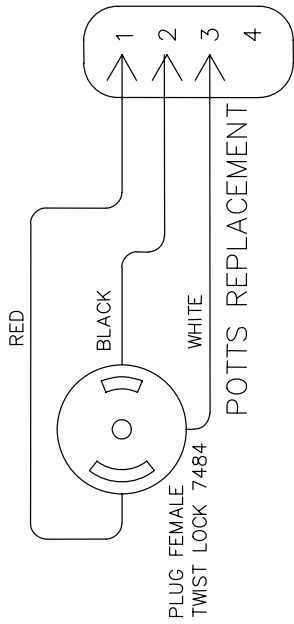
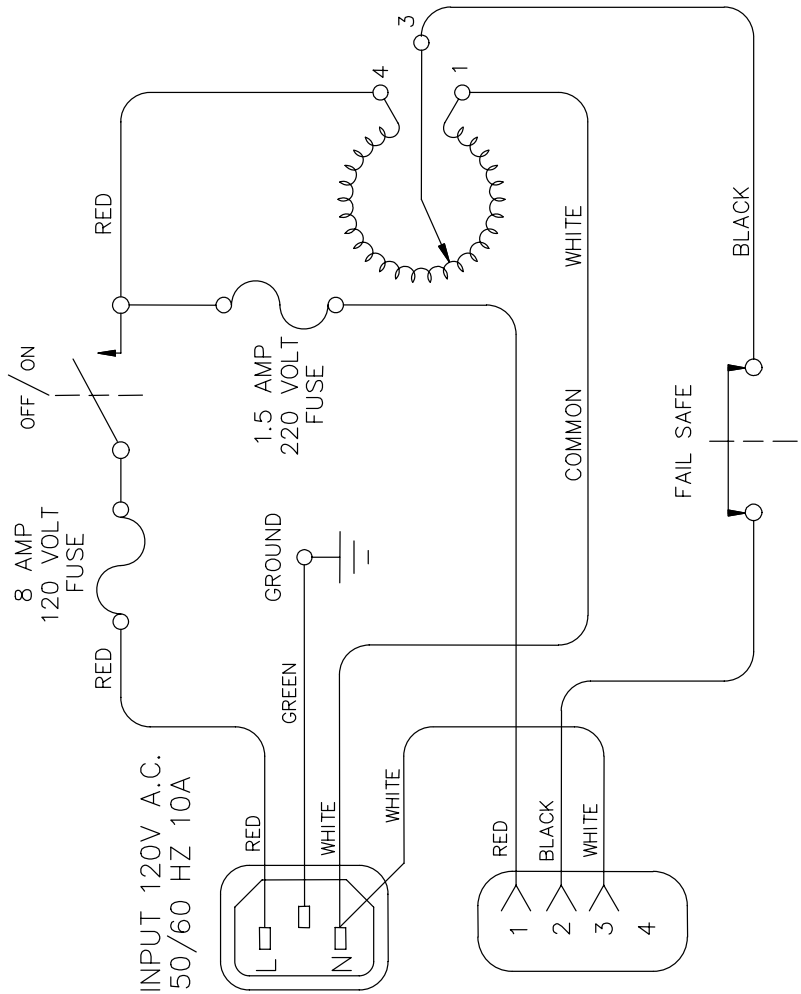
8. Remove the rubber band and lower the take-up, checking the failsafe switch adjustment.
9. Connect the variac to the column with the appropriate harness (D).
10. Install the power cord (C ) and power up the platter.
11. With power applied, move the take-up through its travel to check the failsafe switch setting.

**NOTE:** You can adjust the failsafe cut off point by lowering the linkage hub or raising the failsafe switch.



## PARTS LIST

1	4486	Power Cord 16-3 120v	11	3790	Decal Disconnect Supply Cord
2	3786	Decal 110 VAC	12	3788	Decal Fuse Replacement
3	2244	Decal Variac Switch & Fuse	13	1523	Switch Push Button
4	1006	Transformer	14	4374	Power Inlet, Flanged
5	1005	Brush, Variac	15	2063	Socket CPC
6	2103	Contact Assembly, Variac	16	2068	Receptacle, 4-pin (Rev. Sex)
7	1024	Toggle Switch SPST On-Off	17	5021	Variac Replacement Harness
8	1009	Fuse Holder	18	5020	Variac Retrofit Harness
9	2338	Fuse 1 ½ amp 250V	19	2993	Variac Replacement Shaft, slotted
10	2265	Fuse 8 amp 125V			



**TS VARIAC WIRE SCHEMATIC**

**POT**