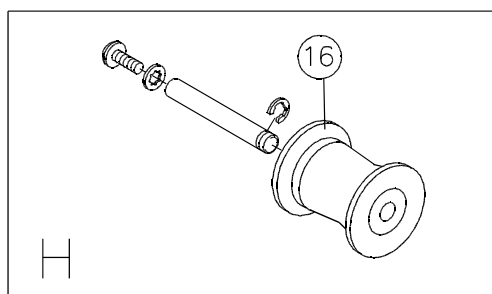
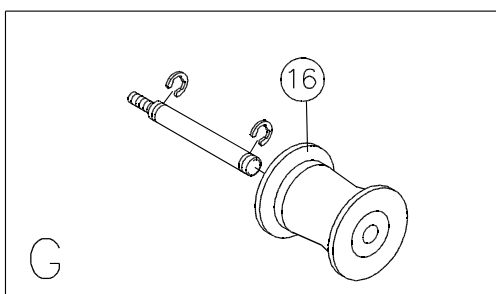
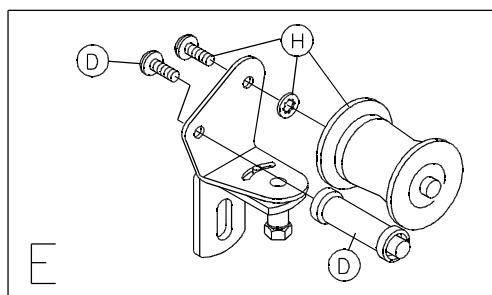
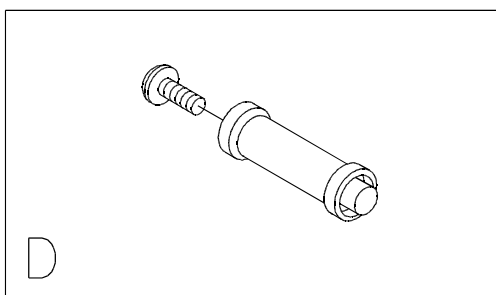
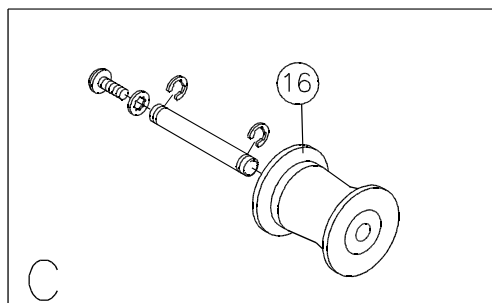
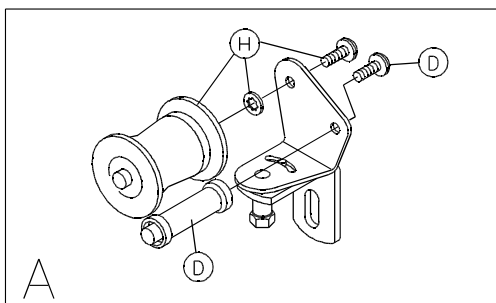


# ALPHA 5-DECK TYPE 3

## Parts Manual #5132

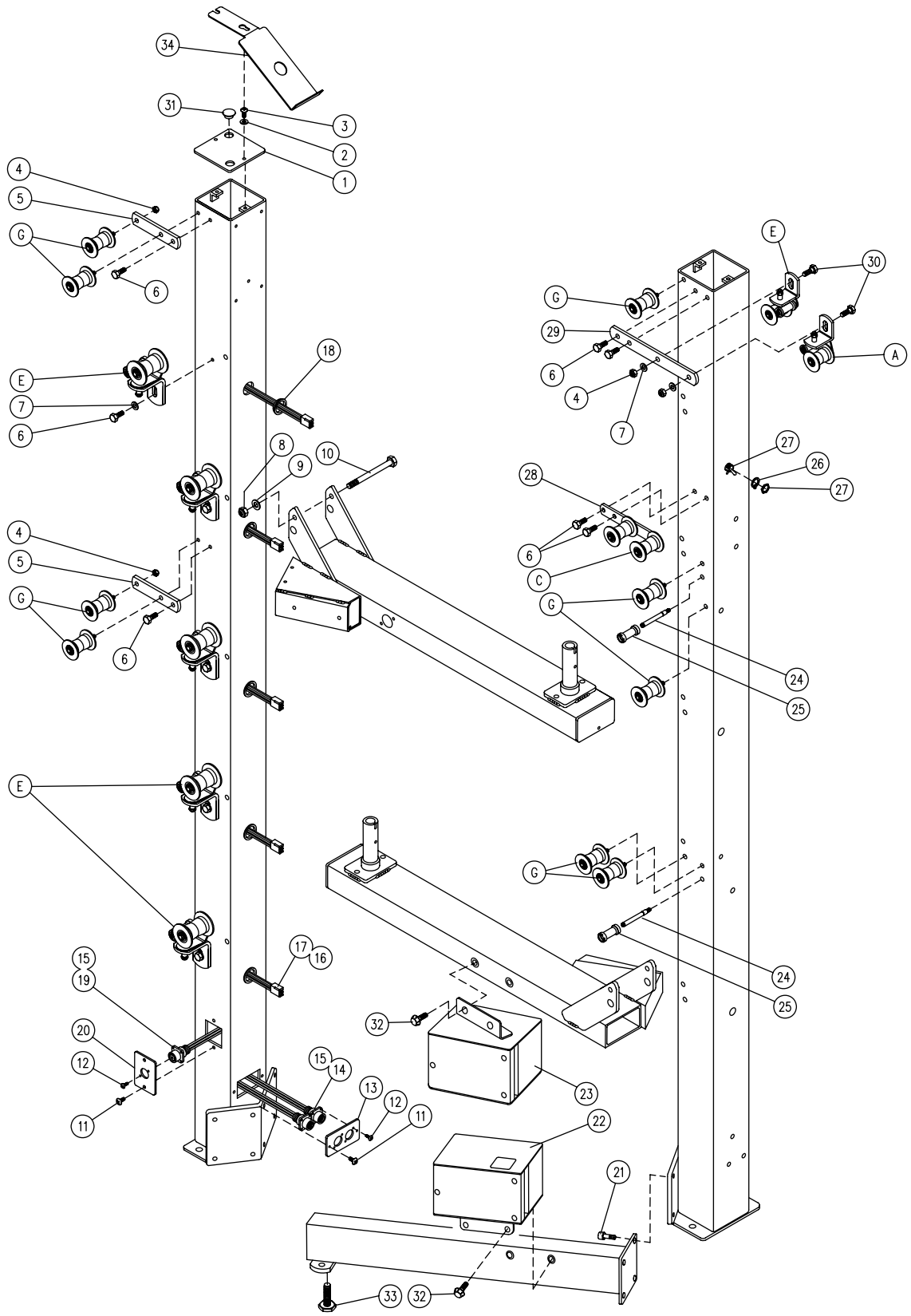
Record Platter System Identification Numbers Here:

Model # \_\_\_\_\_ Serial # \_\_\_\_\_



### Common Pulley Assemblies

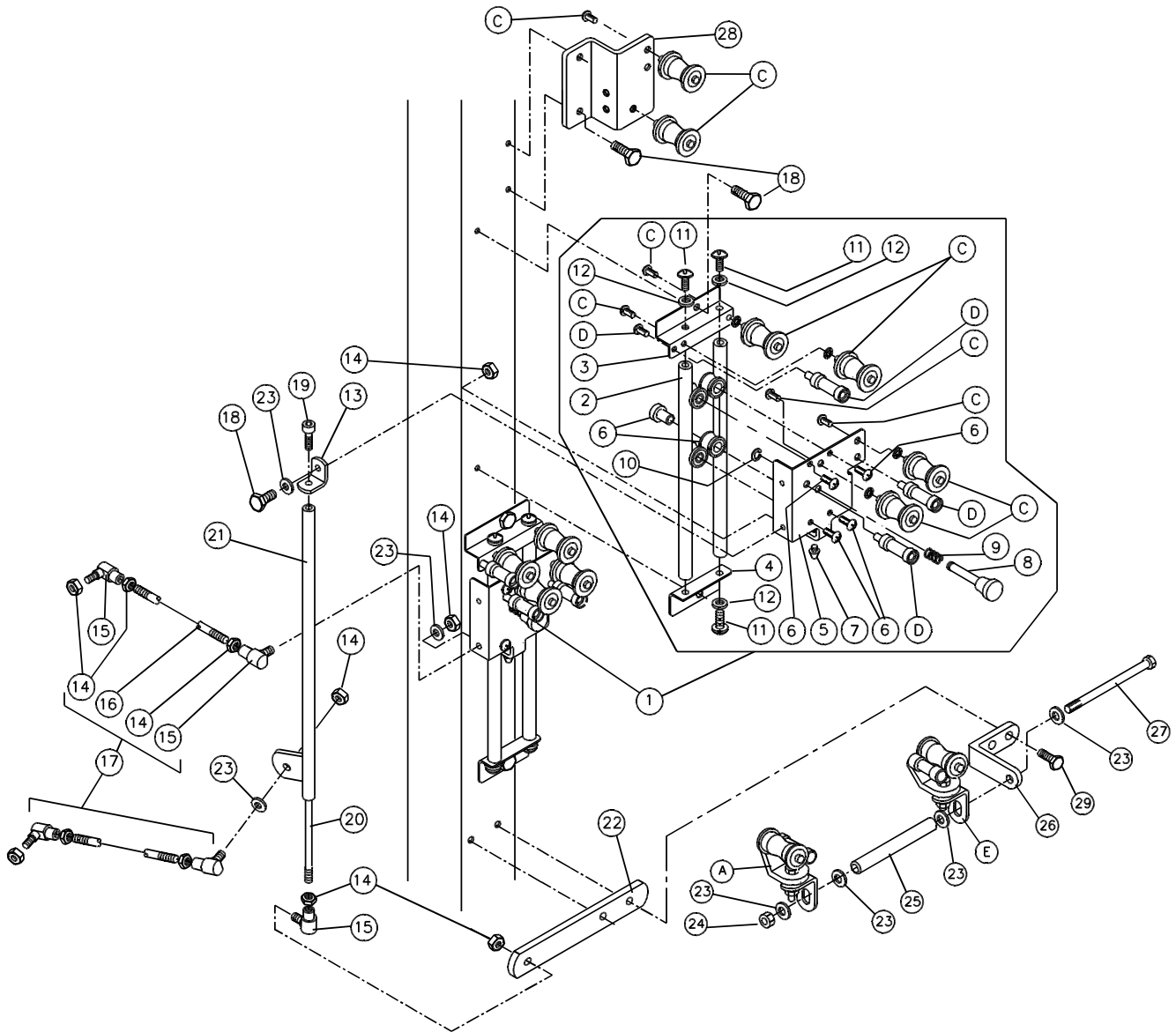
- |     |      |  |
|-----|------|--|
| A)  | 2604 | Castor Swivel Assembly-Left 35mm       |
| C)  | 1447 | Pulley Shaft #6 & Pulley Assembly 35mm |
| D)  | 2602 | Keeper Shaft & Spool Assembly          |
| E)  | 1505 | Castor Swivel Assembly-Right 35mm      |
| G)  | 1504 | Column Shaft & Pulley Assembly 35mm    |
| H)  | 1774 | Pulley Shaft #5 & Pulley Assembly 35mm |
| 16) | 2881 | Pulley 35mm 5/16" ID                   |



**Column Parts**

## Column Parts

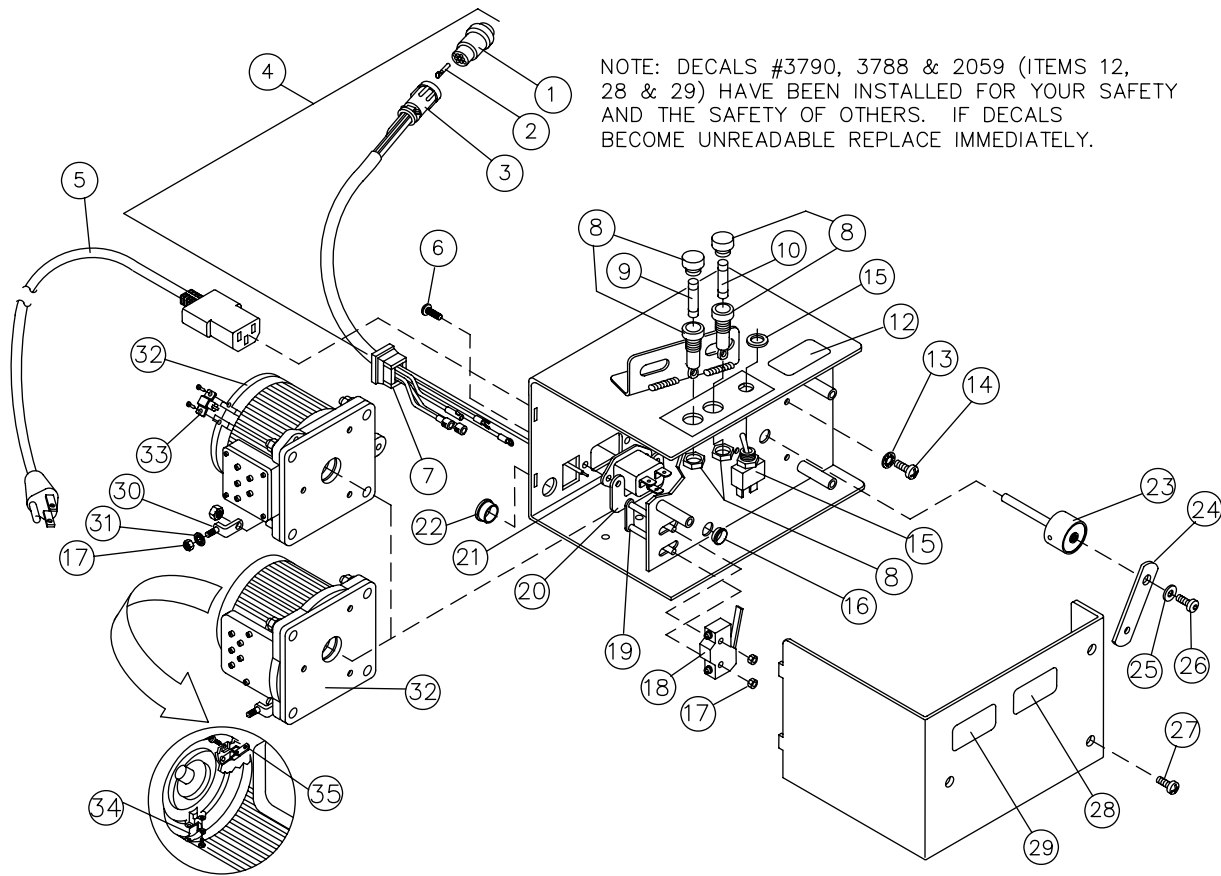
A)	2604	Castor Swivel Assembly, Left 35mm
C)	1447	Pulley Shaft #6 Pulley Assembly 35mm
E)	1505	Castor Swivel Assembly Right 35mm
G)	1504	Column Shaft & Pulley Assembly 35mm
1)	3332	Column End Cap, 5-Deck
2)	1075	Flatwasher, #10
3)	1072	Screw PTH 10-32 x 2"
4)	1088	Locknut, Nylon Insert, 1/4-28
5)	1168	Column Feed Pulley Bracket
6)	1055	HHCS 1/4-28 x 2"
7)	1076	Flatwasher, 1/4"
8)	1090	Hex Nut, 5/16-28
9)	1080	Lockwasher, 5/16"-Split Ring
10)	1062	HHCS 5/16-18 x 5"
11)	1071	Screw PTH 10-32 x 3/8"
12)	2521	Screw PPH #8 x 3/8", Type 25
13)	5107	Column 5-Deck Variac Receptacle Plate
14)	2077	Receptacle, 9 Pin
15)	2064	Pin CPC
16)	1840	Receptacle, 6 Circuit CPS
17)	1709	Socket CPS
18)	1179	Bushing, Open/Closed 7/8"
19)	2056	Receptacle 4 Pin (Std. Sex)
20)	5105	Column Table Port Receptacle Plate
21)	1063	SHCS 3/8-16 x 5/8"
22)	5160	Variac, Leg Mount, Type 3 (See Page 7)
23)	5159	Variac, Arm Mount, Type 3 (See Page 6)
24)	1173	Column Pulley Shaft
25)	1991	Spool, 35mm
26)	1081	Washer Switch Keyed
27)	1012	Toggle Switch, DPDT ON-OFF-ON
28)	1329	Column Twin Pulley Bracket
29)	1328	Column Twin Castor Bracket
30)	1056	HHCS 1/4-28 x 3/4"
31)	1224	Hole Plug 5/8"
32)	2367	HWHS 1/4-20 x 5/8"
33)	1680	Leveler Bolt
34)	7169	Control Plate Storage Rack



**Take-Up & Lower Castor Parts**

## Take-Up & Lower Castor Parts

- A) 2604 Castor Swivel Assembly-Left 35mm
- C) 1447 Pulley Shaft #6 & Pulley Assembly 35mm
- D) 2602 Keeper Shaft & Spool Assembly
- E) 1505 Castor Swivel Assembly-right 35mm
- 1) 2518 Take-Up Asy 35mm Type 2 (Incl item C, D & 2-12)
- 2) 1238 Take-Up Rail
- 3) 1236 Take-Up Upper Bracket
- 4) 1237 Take-Up Lower Bracket
- 5) 1793 Take-Up Plate & Bushing Alpha 35mm Type 2
- 6) 2629 Take-Up Slide Shaft & Roller Assy.
- 7) 2067 Take-Up Stop Bumper
- 8) 1465 Take-Up Stop Pin
- 9) 1234 Take-Up Stop Pin Spring
- 10) 1050 E-Ring, 5/16"
- 11) 1071 Screw PTH 10-32 x 3/8"
- 12) 1078 Lockwasher #10, Internal Tooth
- 13) 1933 Take-Up Slide Tube Bracket
- 14) 1087 Hex Nut, 1/4-28
- 15) 2660 Ball Swivel, 1/4-28
- 16) 2247 Variac Linkage Rod
- 17) 2272 Variac Linkage Rod Assy
- 18) 1055 HHCS 1/4-28 x 2"
- 19) 1106 SHCS 5/16-18 x 3/4"
- 20) 1123 Take-Up Extension Rod
- 21) 1930 Take-Up Slide Tube
- 22) 1124 Column Take-Up Linkage Bracket
- 23) 1076 Flatwasher, 1/4"
- 24) 1088 Locknut, Nylon Insert, 1/4-28
- 25) 1330 Spacer, 3/8"OD x 1/4" ID x 2.75"
- 26) 1170 Column Bottom Castor Bracket 35mm
- 27) 1061 HHCS 1/4-28 x 4"
- 28) 1929 Column 5-Deck Offset Bracket.
- 29) 1056 HHCS 1/4-28 x 3/4"

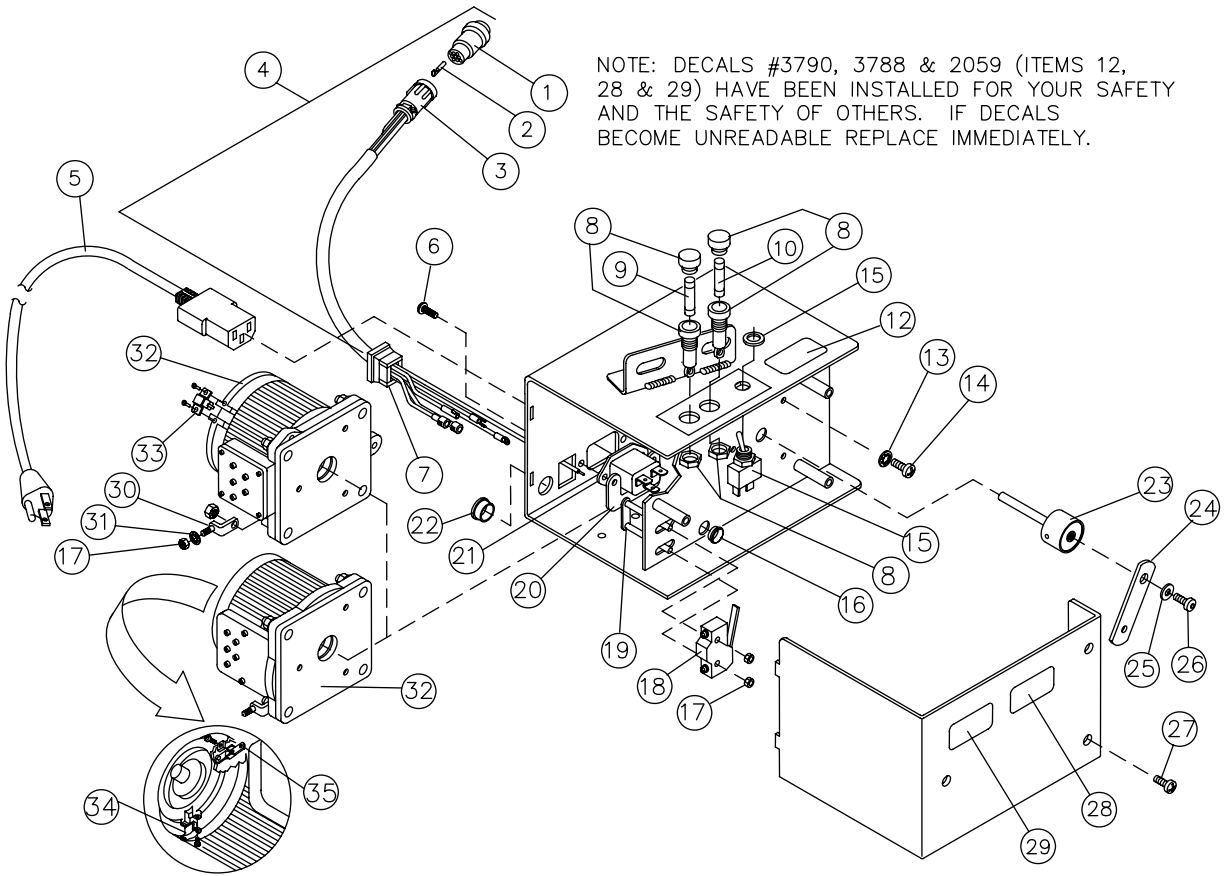


## Alpha 5-Deck Variac Assembly, Arm Mount Parts

5159 Variac Assembly Arm Mount

1)	2078	Plug, 9-Pin	19)	4709	Switch Adjusting Plate Assembly
2)	2063	Socket CPC	20)	4836	Power Inlet Retainer
3)	2071	Clamp, Cable #13	21)	4374	Power Inlet, Flanged
4)	5111	Variac Outlet Harness, Type 3	22)	1224	Hole Plug, 5/8"
5)	4486	Power Cord, 16-3 110 Volt	23)	1643	Variac Shaft & Hub Asy Type 2
6)	2521	Screw PPH #8 x 3/8" Type 25	24)	1640	Variac Link Type 2
7)	5043	Strain Relief .7" Square	25)	1075	Flatwasher #10
8)	1009	Fuse Holder	26)	1233	Button Head Cap Screw 10-32 x 3/8"
9)	2338	Fuse 1.5 AMP 250v	27)	1071	Screw PTH 10-32 x 3/8"
10)	2265	Fuse 8 AMP 125v	28)	2059	Decal, Power Supply Warning
12)	3788	Decal, Fuse	29)	3790	Decal, Cord
13)	1078	Lockwasher #10 - Internal Tooth	30)	3887	Grounding Lug Bracket
14)	1069	Screw PTH 8-32 x 3/8"	31)	1138	Lockwasher #6, Internal Tooth
15)	1024	Toggle Switch SPST On-Off	32)	1006	Transformer 110v Replacement Kit
16)	2343	Bushing, Plastic, 1/2"	33)*	4445	Brush, Variac (Powerstat 116CU)
17)	1083	Nut Hex 6-32	34)*	1005	Brush, Variac (Staco 1010)
18)	2536	Micro Switch-Flat Blade-HD	35)*	2103	Contact Asy Variac (Staco 1010)

\* Refer to the transformer face plate for manufacturer's name and model number. Order replacement parts for the manufacturer specified. No replacement contact is required for Powerstat transformers. Transformers are interchangeable.

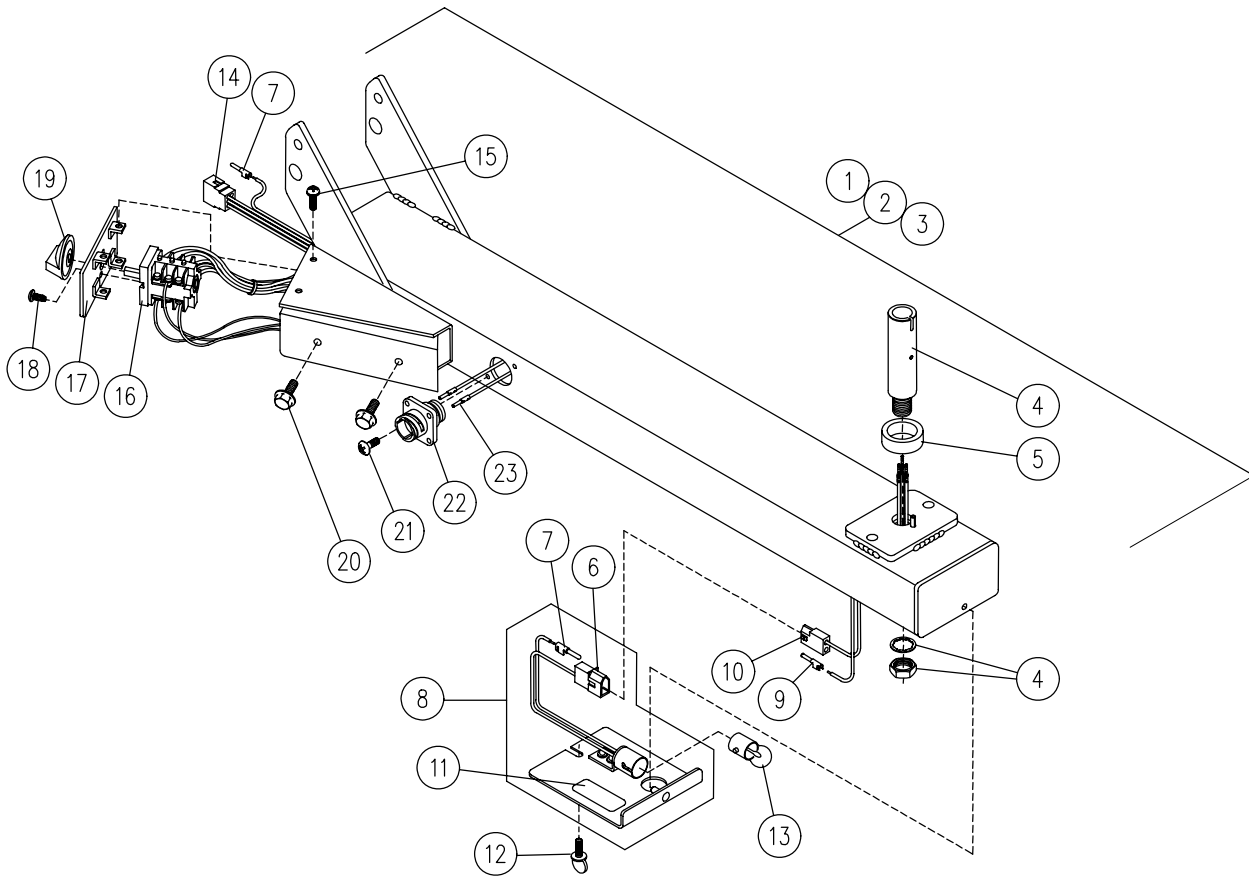


## Alpha 5-Deck Variac Assembly, Leg Mount Parts

5160 Variac Assembly Leg Mount

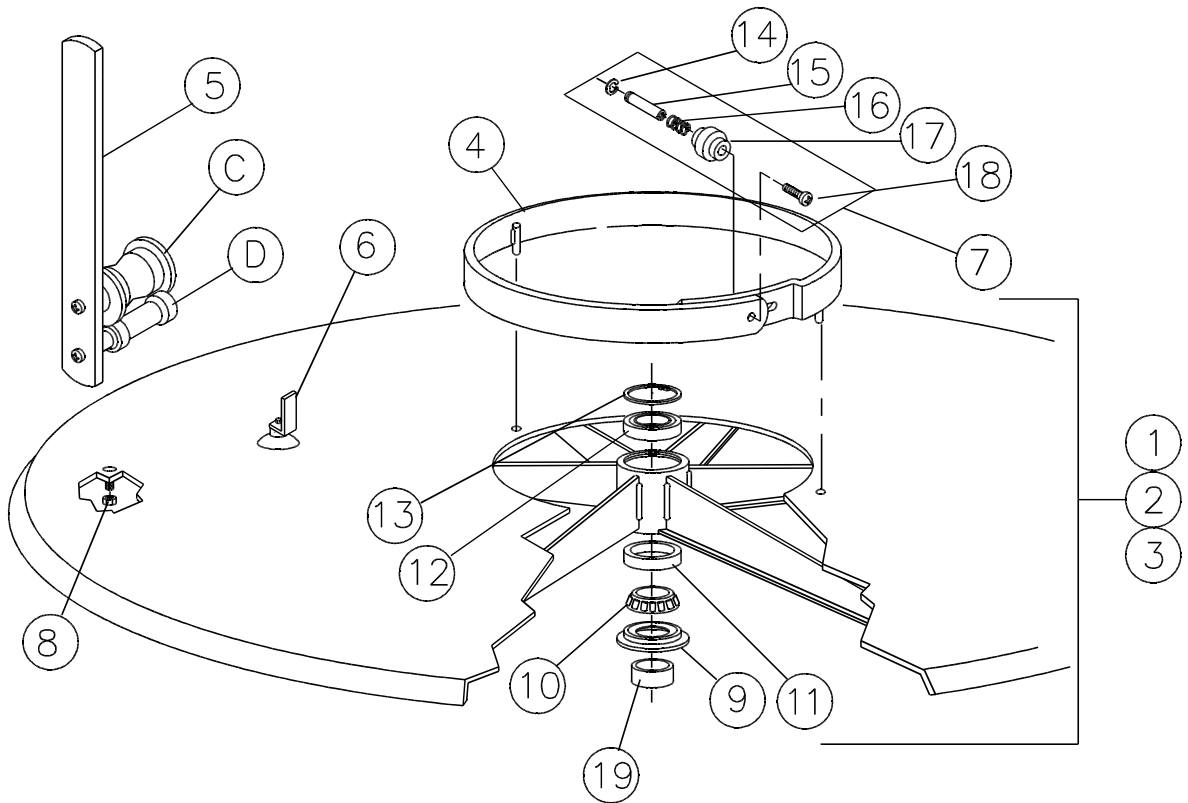
1)	2078	Plug, 9-Pin	18)	2536	Micro Switch-Flat Blade-HD
2)	2063	Socket CPC	19)	4709	Switch Adjusting Plate Assembly
3)	2071	Clamp, Cable #13	20)	4836	Power Inlet Retainer
4)	5111	Variac Outlet Harness, Type 3	21)	4374	Power Inlet, Flanged
5)	4486	Power Cord, 16-3 110 Volt	22)	1224	Hole Plug, 5/8"
6)	2521	Screw PPH #8 x 3/8" Type 25	23)	1643	Variac Shaft & Hub Asy Type 2
7)	5043	Strain Relief .7" Square	24)	1640	Variac Link Type 2
8)	1009	Fuse Holder (Solder type)	25)	1075	Flatwasher #10
	6697	Fuse Holder (Push-on type)	26)	1233	Button Head Cap Screw 10-32 x 3/8"
9)	2338	Fuse 1.5 AMP 250v	27)	1071	Screw PTH 10-32 x 3/8"
10)	2265	Fuse 8 AMP 125v	28)	2059	Decal, Power Supply Warning
12)	3788	Decal, Fuse	29)	3790	Decal, Cord
13)	1078	Lockwasher #10 - Internal Tooth	30)	3887	Grounding Lug Bracket
14)	1069	Screw PTH 8-32 x 3/8"	31)	1138	Lockwasher #6, Internal Tooth
15)	1024	Toggle Switch SPST (Solder type)	32)	1006	Transformer 110v Replacement Kit
	6695	Toggle Switch QC (Push-on type)	33)*	4445	Brush, Variac (Powerstat 116CU)
16)	2343	Bushing, Plastic, 1/2"	34)*	1005	Brush, Variac (Staco 1010)
17)	1083	Nut Hex 6-32	35)*	2103	Contact Asy Variac (Staco 1010)

\* Refer to the transformer face plate for manufacturer's name and model number. Order replacement parts for the manufacturer specified. No replacement contact is required for Powerstat transformers. Transformers are interchangeable.



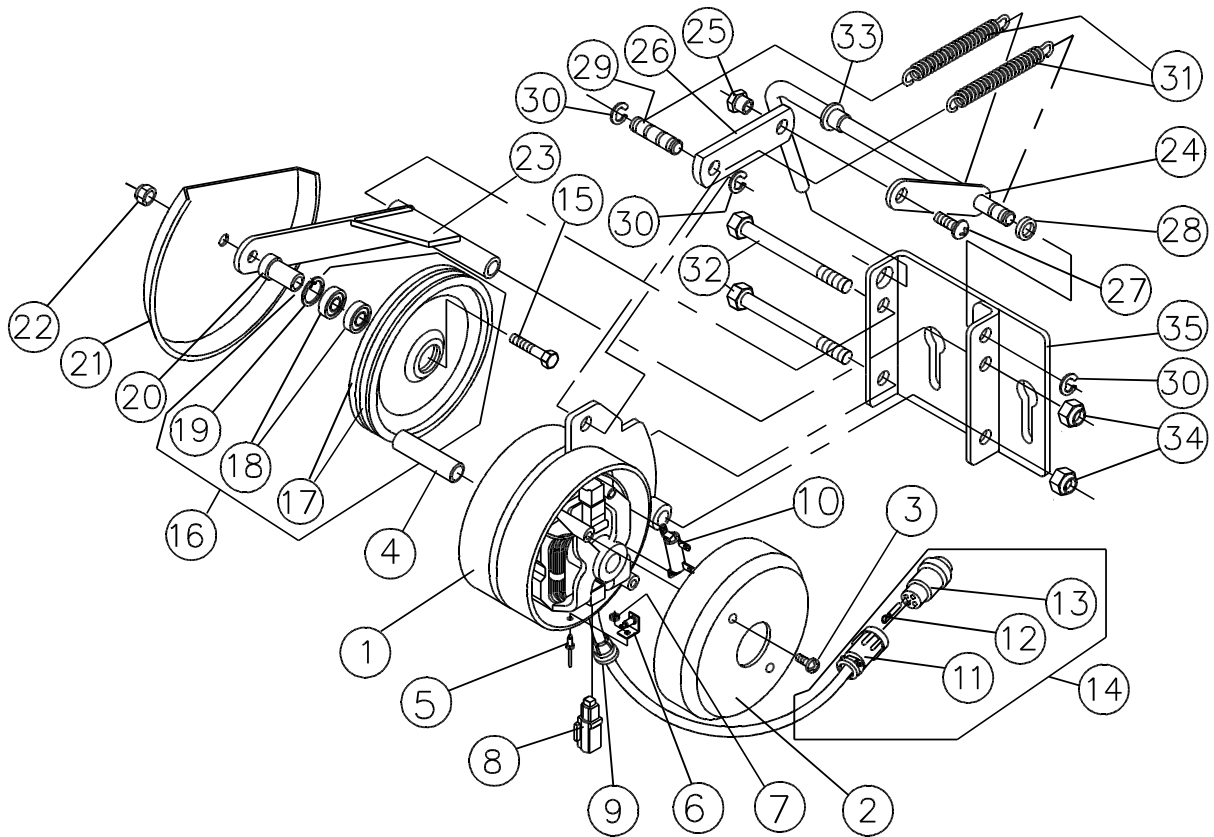
### **Alpha Arm Parts**

1)	2043	Arm Asy Alpha 42" (Incl items 4-17)	13)	2129	Bulb 115v Bayonet Base
2)	2044	Arm Asy Alpha 52" (Incl items 4-17)	14)	1839	Plug, 6 Circuit CPS
3)	4991	Arm Asy Alpha 48" (Incl items 4-17)	15)	1071	Screw PTH 10-32 x 3/8"
4)	2359	Arm Spindle Plug In Retrofit	16)	2352	Selector Switch Alpha
5)	1183	Arm Bearing Spacer	17)	1728	Arm Switch Mnt. Plate Wdmt Alpha
6)	1837	Plug, 2 Circuit CPS	18)	2521	Screw PPH #8 X 3/8" Type 25
7)	1708	Pin CPS	19)	2631	Knob-Selector Switch
8)	1653	Arm Light Cover Asy Type 2	20)	2367	HWHS 1/4-20 x 5/8"
9)	1709	Socket, CPS	21)	1065	Screw PTH 6-32 x 1/4"
10)	1838	Receptacle, 2 Circuit CPS	22)	2068	Receptacle 4 Pin
11)	3787	Decal, Bulb Replacement	23)	2063	Socket, CPC
12)	6641	Screw Thumb 10-32 x 3/8"			



### **Disk, Center Ring & Projector Arm Parts**

C)	1447	Pulley Shaft #6 & Pulley Asy 35mm	10)	1256	Disk Lower Bearing
D)	2602	Keeper Shaft & Spool Assembly	11)	1257	Disk Lower Bearing Race Cup
1)	1854	Disk Asy 42" (Includes items 8-13)	12)	1254	Disk Upper Bearing
2)	1858	Disk Asy 48" (Includes items 8-13)	13)	1255	Disk Upper Bearing Retaining Ring
3)	1865	Disk Asy 52" (Includes items 8-13)	14)	1050	E-Ring 5/16"
4)	1471	Center Ring Asy (includes item 7)	15)	1265	Shaft #9
5)	1515	Projector Arm Asy 35mm (Incl. C & D)	16)	1266	Center Ring Knob Spring
6)	2225	Disk Suction Cup Assembly	17)	1264	Center Ring Knob
7)	1727	Center Ring Knob Assembly	18)	1070	Screw PFH 8-32 x 3/8"
8)	1084	Locknut, Nylon Insert 6-32	19)	1183	Arm Bearing Spacer
9)	1258	Disk Lower Bearing Grease Retainer			

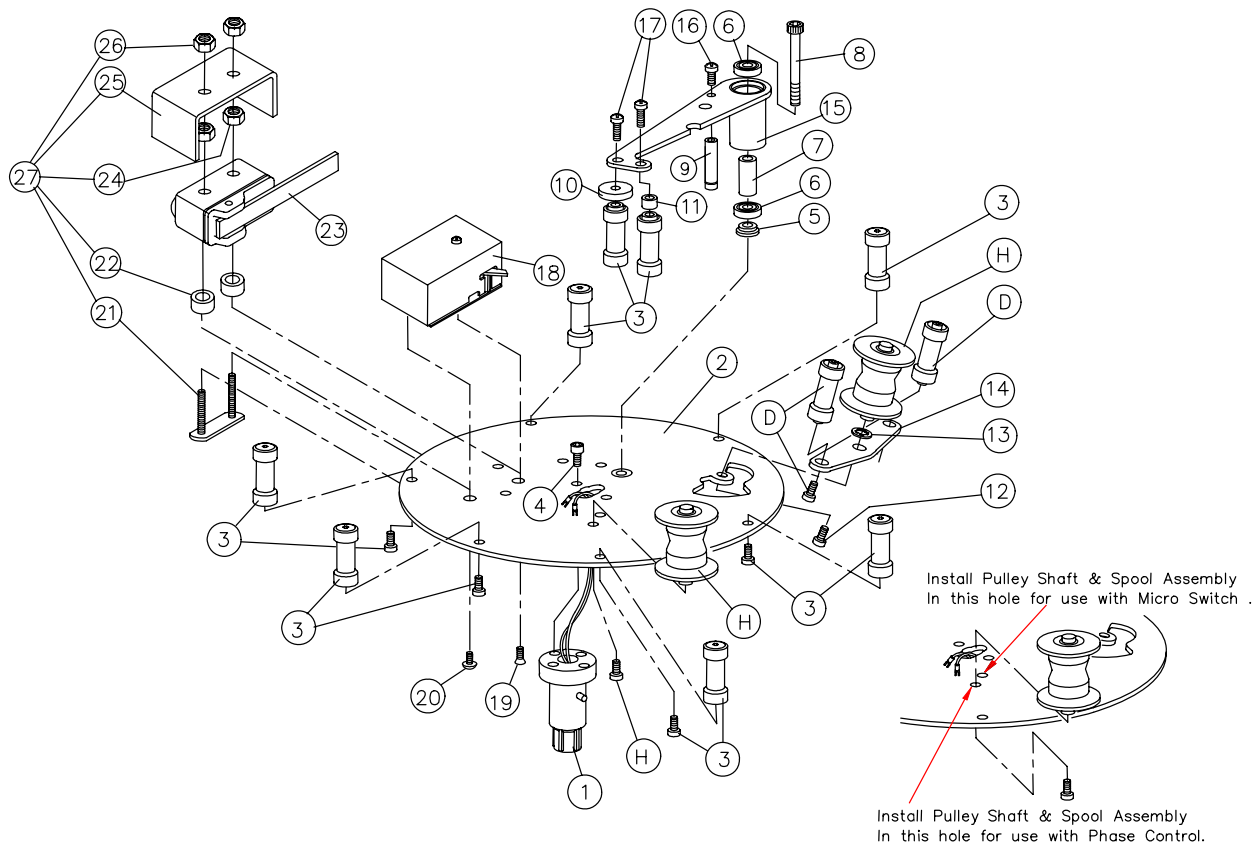


### **Drive Motor Parts**

1826 Drive Motor Assembly, Type 4 Alpha (Includes all items shown)

2)	1192	Drive Motor End Cover	19)	2224	Retaining Ring Internal 7/8" Mounting
3)	1091	Screw PPH 10-24 x 3/8" Type F	20)	1633	Drive Motor Wheel Spacer Type 3
4)	1630	Drive Motor Hub Type 3, 3/8" dia	21)	1632	Drive Motor Wheel Shield Type 3
5)	1052	Pop Rivet 1/8" X 5/16" Steel	22)	1088	Locknut, Nylon Insert 1/4-28
6)	1775	Drive Motor Diode & Brkt Asy	23)	1620	Drive Motor Wheel Arm Weldment Type 3
7)	2026	Back-Up Plt Pop Rivet 1/8"	24)	1688	Drive Motor Toggle Handle Wdmt Type 3
8)	1004	Brush Motor 115 volt (1 pair)	25)	1631	Drive Motor Linkage Connector Type 3
9)	1127	Strain Relief 5/8 x .062	26)	1634	Drive Motor Connector Link Type 3
10)	1253	Resistor 2 OHM with Hardware	27)	1071	Screw PTH 10-32 x 3/8"
11)	2070	Clamp Cable #11	28)	2774	Nylon Washer, 1/2"OD x .320"
12)	2064	Pin Male	29)	1402	Drive Motor Spring Pin
13)	2069	Plug 4 Pin	30)	1050	E Ring 5/16"
14)	2299	Drive Motor Plug Wire Harn Alpha	31)	1818	Drive Motor Spring Type 3
15)	2370	HHCS 1/4-28 x 1 1/4"	32)	3009	HHCS 1/4-28 x 3 3/4"
16)	2140	Drive Motor Wheel Asy	33)	1128	Bushing Plastic 2" (included in #35)
17)	2362	Drive Motor Rubber Tire	34)	1088	Locknut, Nylon Insert 1/4-28
18)	2066	Bearing, Drive Wheel 7/8 OD x 3/8 ID 3/4"	35)	2796	Drive Motor Adj. Plate Asy Type 4

**Note:** A Drive Motor Shield SP (Part No. 3822) is used on the motor installed on the lower arm. When replacing this motor, make sure the shield is reinstalled.



**Plug-In Control Plate Assembly 35mm MIC #3044**  
**Plug-In Control Plate Assembly 35mm PHC #3070**

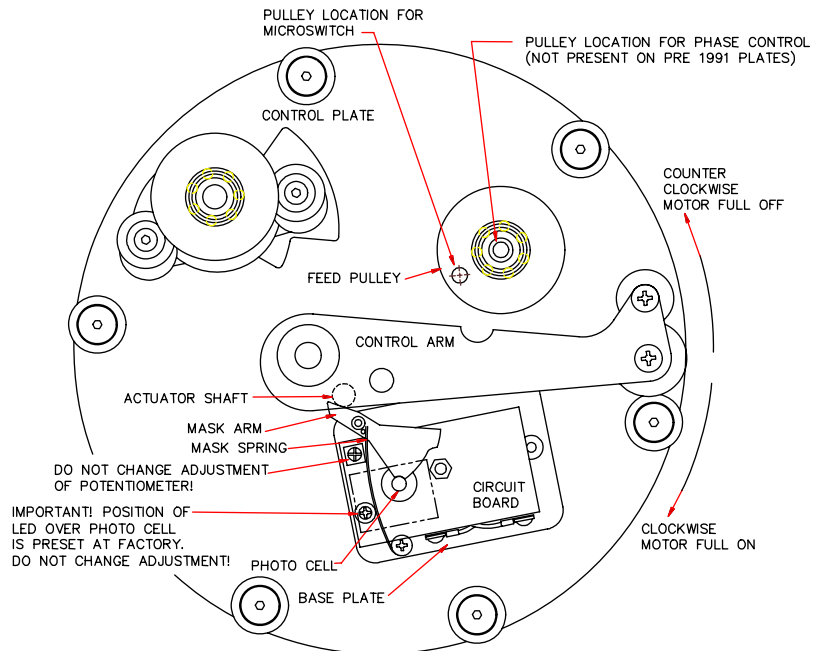
D	2602	Keeper Shaft & Spool Assembly	13	1078	Lockwasher #10-Internal Tooth
H	1774	Pulley Shaft #5 & Pulley Asy. 35mm	14	1548	Control Plate Spool Keeper Bracket
1	2357	Cont Plt Plug-in Adapter (incl item 4)	15	3348	Control Plate Sensor Arm & Hub
2	1593	Control Plate & Nut Sub-Asy. 35mm	16	1069	Screw PTH 8-32 x 3/8"
3	1513	Control Plate Spool & Shaft Asy.	17	2181	Screw PPH 10-32 x 3/4"
4	1064	SHCS 8-32 x 3/8"	18	2430	Phase Cont'l W/Mnt Package (Incl 19 & 20)
5	2380	Control Plate Sensor Arm Washer	19	1070	Screw PFH 8-32 x 3/8"
6	2407	Bearing 5/8 OD x 1/4 ID	20	1069	Screw PTH 8-32 x 3/8"
7	2379	Control Plate Sensor Arm Spacer	21	4731	Switch Adjusting Plate
8	2408	SHCS 1/4-28 x 2"	22	1240	Spacer 5/16" x 13/64" x 1/4"
9	1265	Shaft #9	23	2536	Micro Switch-Flat Blade-HD
10	2006	Control Plate Arm Film Spacer	24	1083	Hex Nut, 6-32
11	1153	Cont Plt Arm Spool Spacer Float	25	1595	Control Plate Switch Cover
12	1592	SHCS 10-32 x 2"	26	1084	Locknut, Nylon Insert 6-32
			27	3610	Micro Sw. Mnt Hdwr (incl 21, 22, 24, 25 & 26)

**NOTE:** #3044 Control Plate Assembly Plug-in 35mm MIC and #3070 Control Plate Assembly Plug-in 35mm PHC can be used on older systems that do not have plug-in spindles. Disconnect the red and blue wire from the switch terminals. Unbolt the plug-in hub (item 1) from the bottom of the control plate.

**NOTE:** When replacing #2536, Micro Switch-Flat Blade-HD, remove the spring from behind the switch arm if present.

## PHASE CONTROL Adjustment Instructions

1. Remove the Plug-in Control Plate from the Platter System by grasping it with both hands and pulling straight up. (**NOTE:** If you do not have Plug-in Control Plates, use the Control Plate removal instructions from the Operations Manual which came with your Platter System.)
2. Remove the screw and washer from the Phase Control cover. Position the Mask Arm in the center of its vertical slot and remove the cover.
3. Loosen the Phase Control mounting screws on the bottom of the control plate and then snug them back down so that the Phase Control is held in place, but its position can be shifted if necessary.
4. Verify that the Mask Spring is positioned correctly, relative to the spring pin in the Mask Arm. The Mask Arm can slide up and down on the shaft it pivots on; it is important that it remain seated during adjustment. Move the control arm to its full on position (clockwise). With the control arm in this position, rotate the Phase Control so that the round cutout in the Mask Arm is aligned with the round hole in the Photo Cell.

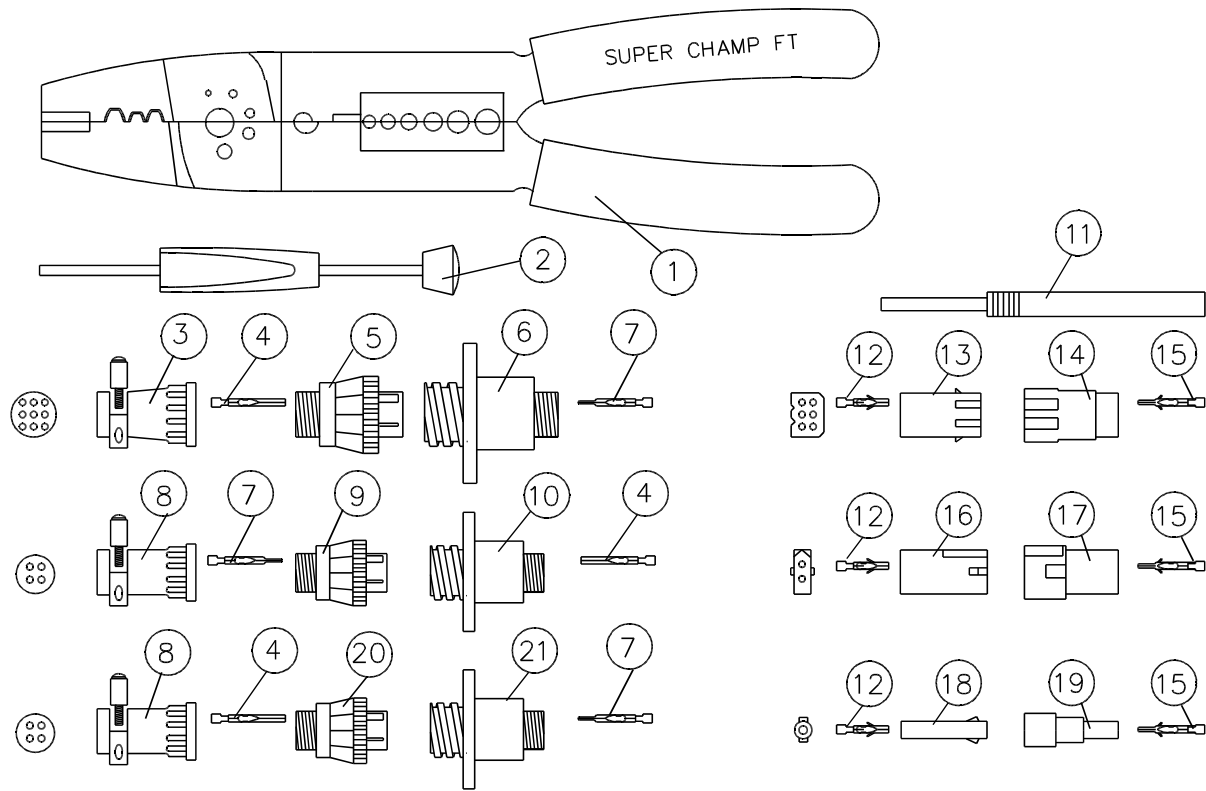


**NOTE:** Do not remove the LED over the Photo Cell to check alignment!

Tighten both hold-down screws. Recheck the alignment after moving the control arm back and forth.

5. Move the control arm to its full off position (counter clockwise) and reinstall the cover on the Phase Control. Be sure the red and blue wires are aligned with the notch in the cover and that the cover is seated so that it does not interfere with the movement of the Mask Arm. Secure the cover with the screw and washer. Reinstall the Control Plate on the Platter System.

**NOTE:** The potentiometer inside the Phase Control has been preset at the factory and should not be altered. The position of the LED over the Photo Cell is also preset at the factory and should not be altered. Only position adjustments should be required to make the Phase Control function properly.



- |     |      |                         |     |      |                              |
|-----|------|-------------------------|-----|------|------------------------------|
| 1)  | 2674 | Pin Crimping Tool       | 12) | 1709 | Socket, CPS                  |
| 2)  | 2673 | Pin Extraction Tool CPC | 13) | 1840 | Receptacle, 6 Circuit CPS    |
| 3)  | 2071 | 2071 Clamp Cable #13    | 14) | 1839 | Plug, 6 Circuit CPS          |
| 4)  | 2063 | Socket CPC              | 15) | 1708 | Pin, CPS                     |
| 5)  | 2078 | Plug 9 Pin              | 16) | 1838 | Receptacle, 2 circuit CPS    |
| 6)  | 2077 | Receptacle 9 Pin        | 17) | 1837 | Plug, 2 Circuit CPS          |
| 7)  | 2064 | Pin CPC                 | 18) | 1836 | Receptacle, 1 Circuit CPS    |
| 8)  | 2070 | Clamp Cable #11         | 19) | 1835 | Plug, 1 Circuit CPS          |
| 9)  | 2069 | Plug 4 Pin              | 20) | 2057 | Plug, 4 Pin - (std sex)      |
| 10) | 2068 | Receptacle 4 Pin        | 21) | 2056 | Receptacle 4 Pin - (std sex) |
| 11) | 2669 | Pin Extraction Tool CPS |     |      |                              |