

# Table Splicing Station Retrofit Kit

#7060 (110V) and #7106 (220V)

Installation and Parts List #7107

## Tools Required:

phillips screwdriver

pliers

3/8" socket, nut driver or wrench.

## Hardware package includes:

one table harness

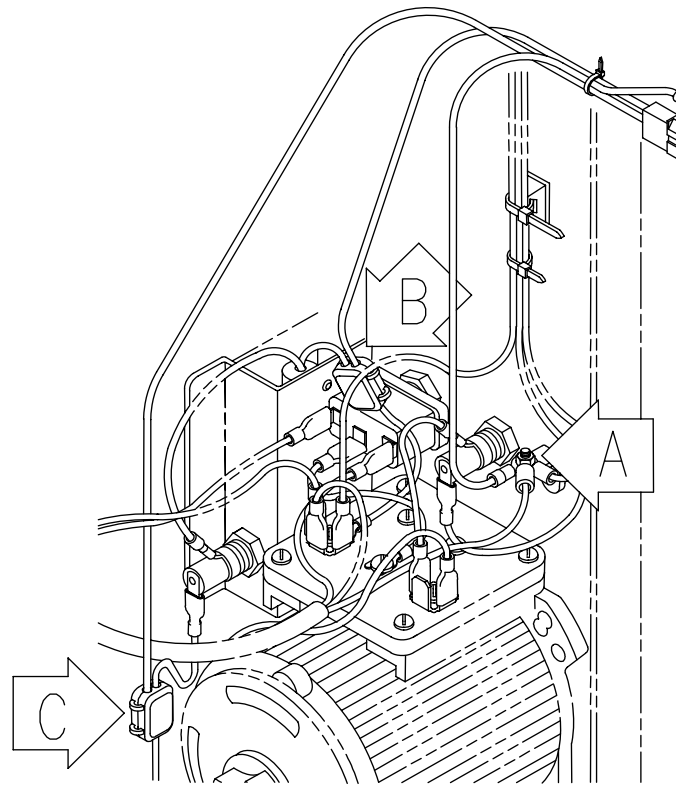
two flatwashers #10

eight screws PPH 10-24 x 3/8"

one table cover

**CAUTION: Disconnect the table from the electrical power source before proceeding!**

1. Remove the bottom cover from the table. The cover will not be reused. Lay the table on the back side to make the under side more accessible.
2. Install the Splicing Station Table Harness. On 110V tables connect the ring tongue on the green and yellow wire to the grounding lug (A).



**Figure 1**

**NOTE:** On some older tables the grounding lug is located on the corner of the transformer base. Later models have a grounding lug welded to the table shell.

3. Connect the end of the white wire to the wire that runs from terminal #4 to the lamp socket using one Scotchlock Connector (B). Connect the end of the black wire to the wire that runs from the lamp switch to the lamp fuse using one Scotchlock Connector (C).

On 220V CE Models, connect the green and yellow wire to the ground terminal at the line filter, connect the brown wire to the wire that runs from the lamp to the lamp switch and connect the blue wire to the blue wire at terminal #4 of the transformer.

4. Extend the cabinet until the locking pins are engaged in the slots in the arms and the mount and cabinet are positioned as shown in Figure 2, page 2.
5. Loosen the nuts securing the Splicing Station Mount Clamp and move the clamp in the direction shown all the way to the end of the slots (see Figure 2).

6. Position the assembly on the bottom of the table so the recess in the mount fits around the single leg of the table. Connect the Table Harness installed in step 2 to the Cabinet Harness protruding through the box connector in the mount panel.

7. Position the mount plate so two Phillips Pan Head 10-24 x 3/8 Type F screws (item 12) and two #10 flatwashers (item 10) can be installed in the original cover screw holes shown.

8. Move the mount plate over the flange of the table shell and all the way to the end of the slots in the direction shown in Figure 3. Tighten all four clamp nuts. Reach behind the mount plate and make sure the clamp is over the table flange before tightening the nuts.

9. Install the new Table Cover on the bottom of the table using four Philips Pan Head 10-24 x 3/8" Type F screws (see Figure 4).

**NOTE:** Some make-up tables may have 2" x 2" tubing legs. To install the cover on these models, remove the corners at the perforations and smooth the rough edges of the perforations.

10. Grasp the release handle at the front of the station to release the latch and carefully lower the cabinet until it contacts the table leg. **Do not allow the cabinet to drop.** Carefully place the table in the upright position on the floor. Now grasp the bottom of the cabinet and pull the cabinet away from the table and up.

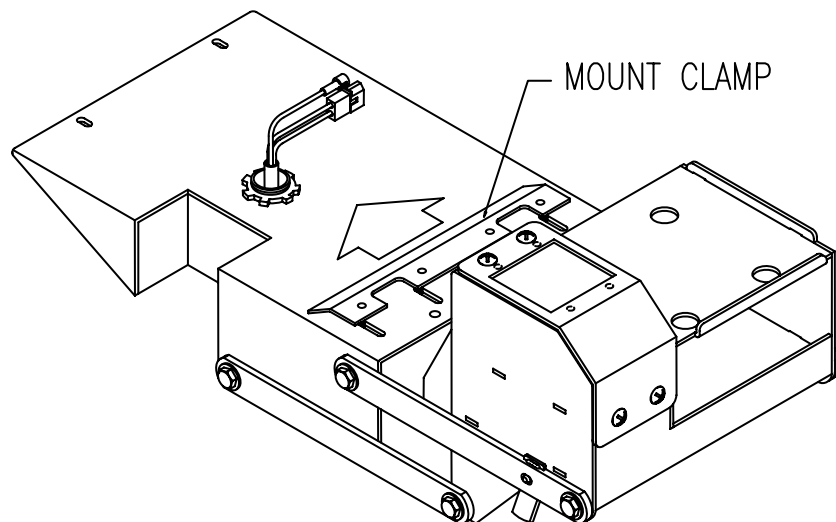


Figure 2

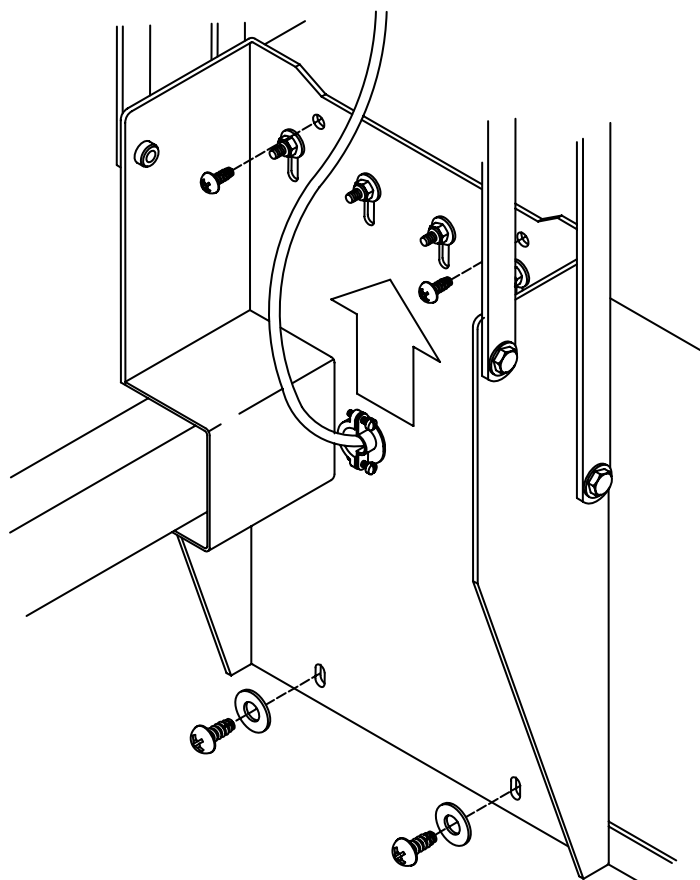
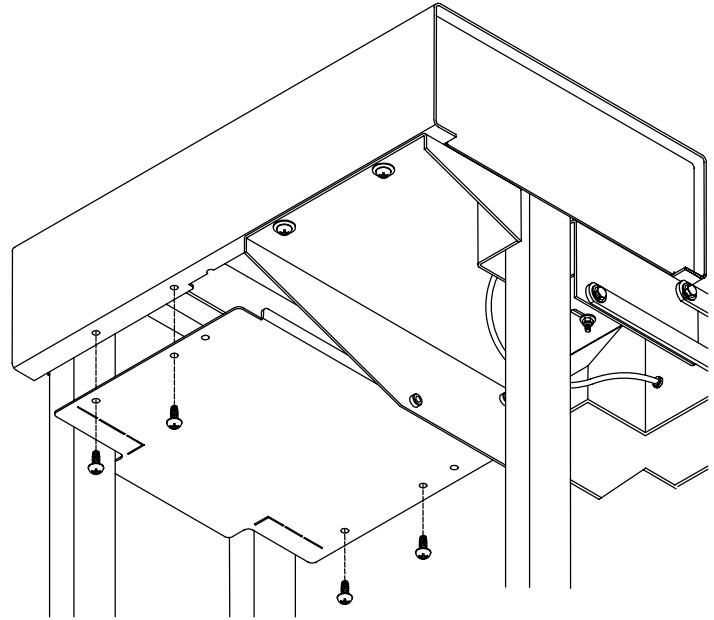


Figure 3

11. As the cabinet is raised the latch pins will be pushed into the cabinet by the arm ramps and the pins will extend into the slots. Pulling forward on the release handle will retract the pins and allow the station to be lowered. **Do not allow the cabinet to drop.**

12. Check to see that the harness is not pinched as the station is raised and lowered. Reposition if necessary. Apply power and turn the table light switch to "ON". Both the table light and the splicer station light should illuminate.

**NOTE:** If the station must be removed for any reason, the mount plate and bottom cover can be left in place on the table. Loosen the box connector and gently pull the connectors through the hole to disconnect the station harness from the table harness. Remove the four capscrews connecting the arms to the mount plate and remove the cabinet assembly.

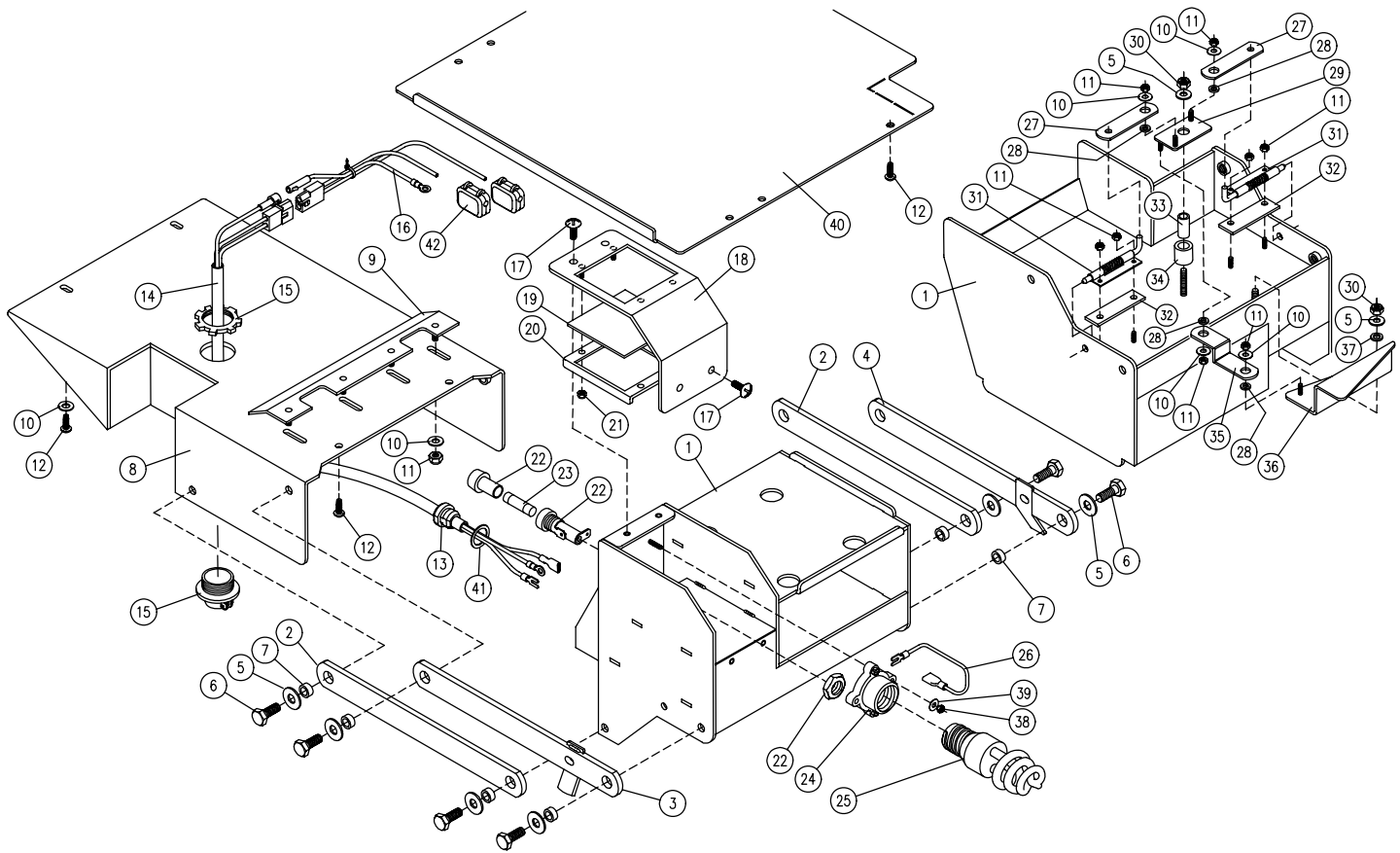


**Figure 4**

**NOTE:** The station lamp is fused independently from the table lamp. The station lamp fuse is located on the back side of the station below the lamp. Replace the fuse with the same size fuse.

## **CAUTION:**

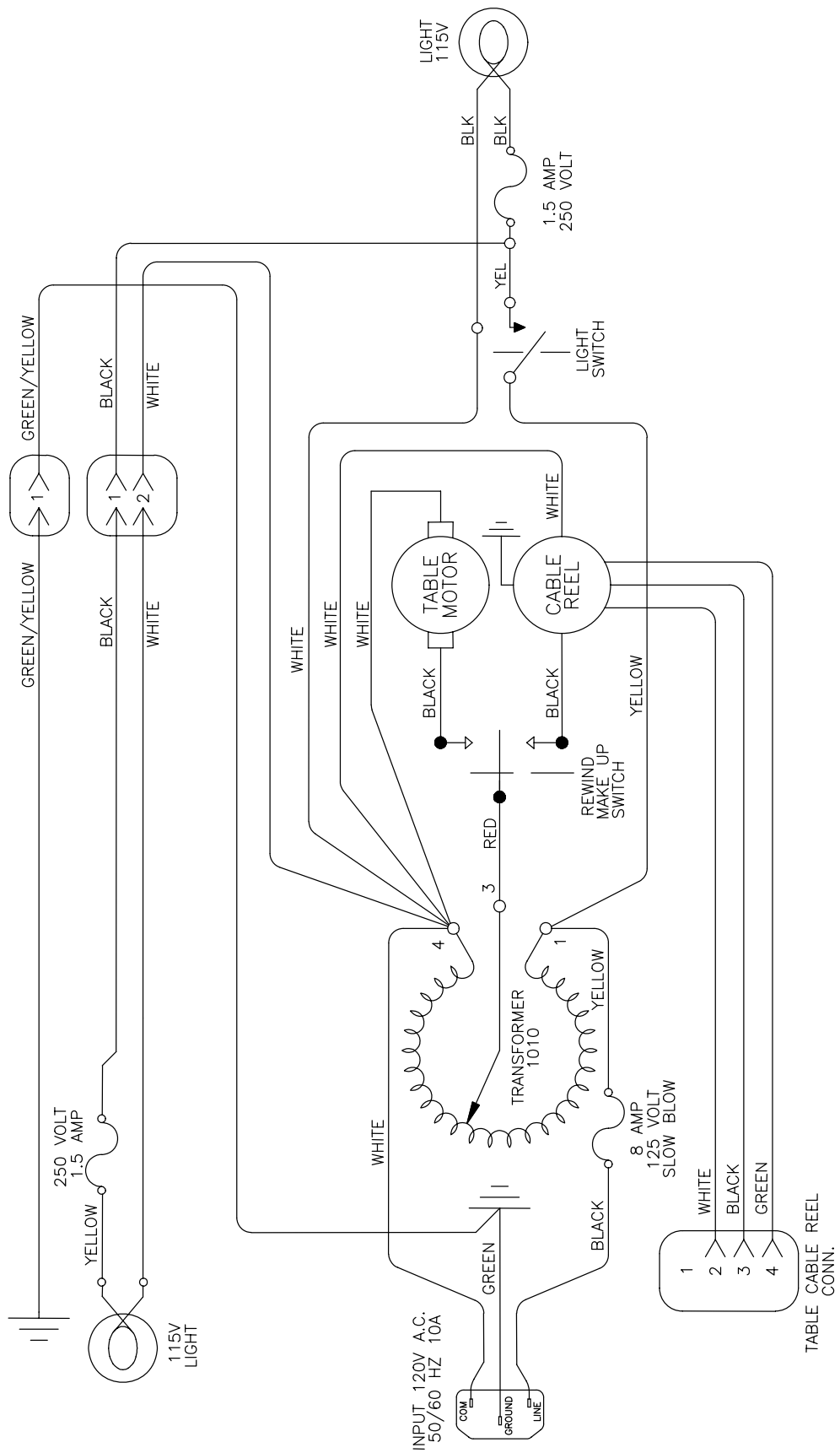
DO NOT move the make-up table with the splicing station in the working (raised) position.



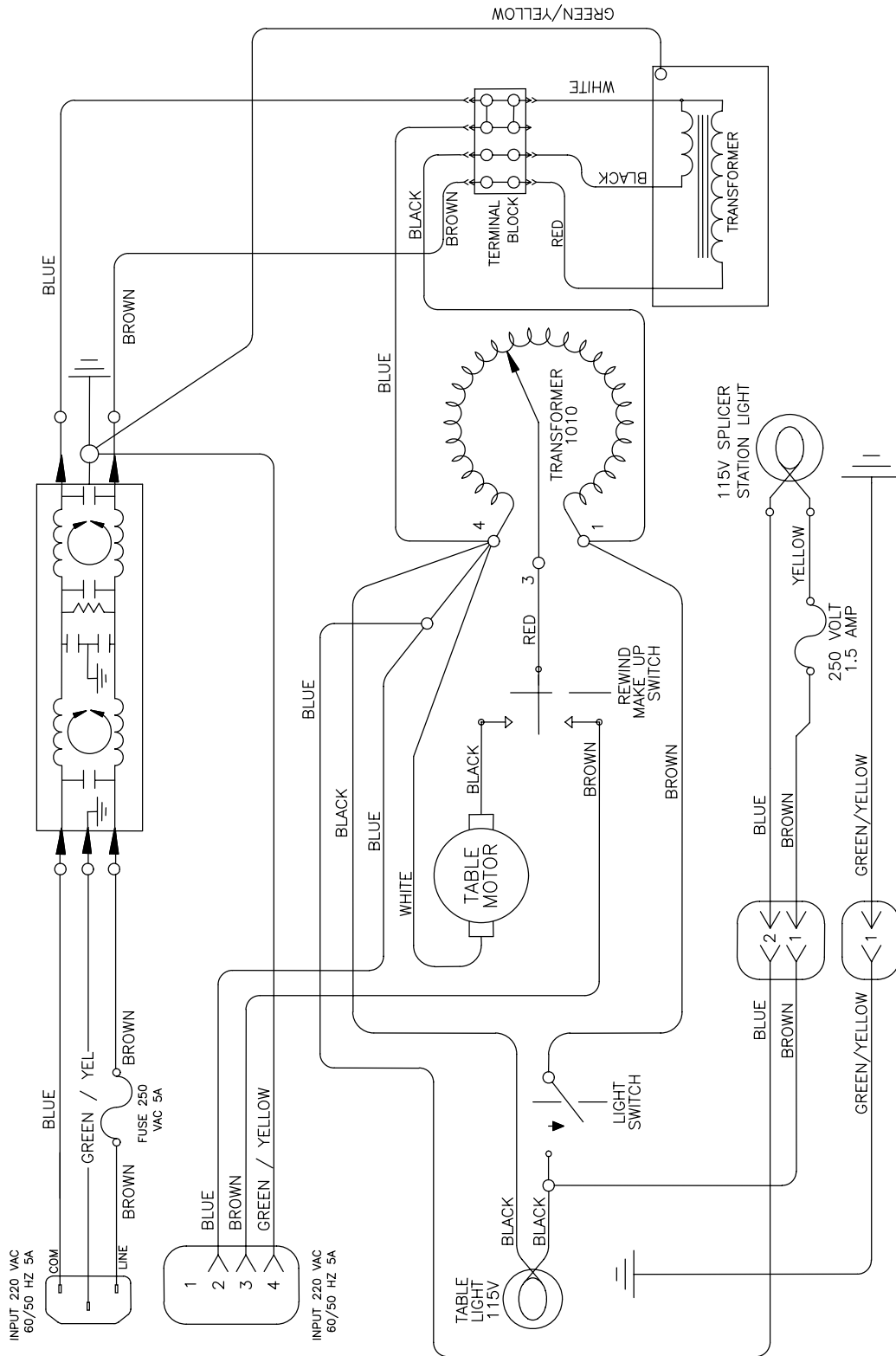
## **PARTS BREAKDOWN**

### Splicing Station Retrofit Kit #7060 (110V) and #7106 (220V)

1	7047	Splicing Station Cabinet	22	6697	Fuse Holder QC (110V)
2	7049	Splicing Station Arm	22	4748	Fuse Holder 5 x 20mm (220V)
3	7099	Splicing Station Upper Arm Weldment L	23	2338	Fuse 1.5 Amp 250V (110V)
4	7098	Splicing Station Upper Arm Weldment R	23	7114	Fuse 1.6 Amp 5 x 20mm (220V)
5	1076	Flatwasher ¼"	24	7080	Lampholder Phenolic
6	5004	HHCS ¼-20 x 3/4	25	7079	Fluorescent Bulb 13W
7	7051	Bushing .375 OD X .259 ID X .275 L	26	7068	Splicing Station Fuse Harness
8	7048	Splicing Station Mount Panel Weldment	27	7046	Splicing Station Connecting Link
9	7039	Splicing Station Mount Clamp	28	7053	Bushing .375 OD X .209 ID X .085 L
10	1075	Flatwasher #10	29	7042	Splicing Station Latch Trip
11	2449	Lock Nut Nylon Insert 10-32	30	2395	Lock Nut Nylon Insert ¼-20
12	1091	Screw PPH 10-24 X 3/8 Type F	31	5802	Slide Latch
13	2391	Strain Relief 5/8 x .125	32	7045	Splicing Station Latch Spacer
14	7059	Splicing Station Cabinet Harness (110V)	33	7052	Bushing .375 OD X .259 ID X .704 L
14	7110	Splicing Station Cabinet Harness (220V)	34	7054	Bushing .750 OD X .406 ID X .620 L
15	7081	Box Connector ¾"	35	7044	Splicing Station Latch Link
16	7058	Splicing Station Table Harness Kit (110v)	36	7043	Splicing Station Latch Lever
16	7109	Splicing Station Table Harness Kit (220v)	37	7055	Bushing .375 OD X .259 ID X .085 L
17	1071	Screw PTH 10-32 X 3/8	38	1807	Lock Nut Nylon Insert 8-32
18	7036	Splicing Station Lamp Cover	39	4962	Flatwasher #8 3/8 OD SS
19	7057	Splicing Station Lamp Diffuser	40	7041	Splicing Station Table Cover
20	7035	Splicing Station Diffuser Clamp	41	1763	Back-up Washer Strain Relief
21	1084	Lock Nut Nylon Insert 6-32	42	2360	Connector Scotchlock



**110V TABLE & SPLICING STATION SCHEMATIC**



**220V CE TABLE AND SPLICING STATION SCHEMATIC**